

Shiver-Ring

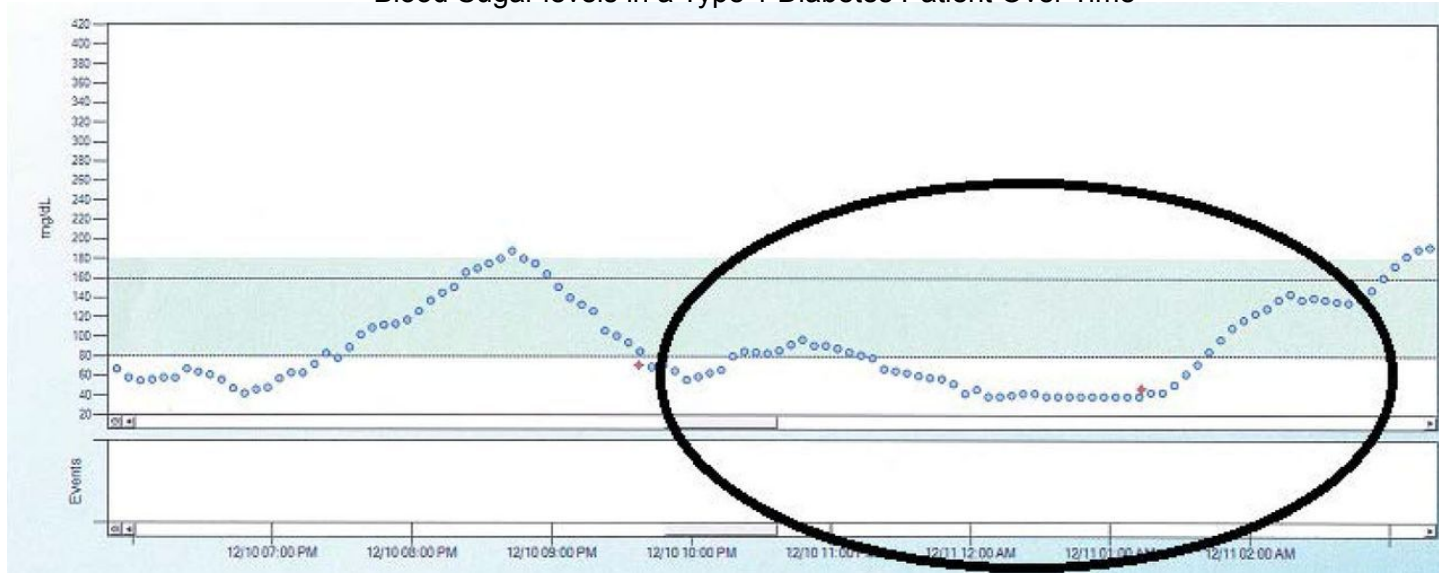
FPR Presentation for Team 2

Michael Burton, Connor Loughman,
Adam Maciaszek, John Murray

Problem Statement

When diabetic patients sleep their blood sugar levels can drop and result in hypoglycemic events, if the patient is unable to wake these events can go untreated and result in coma and even death.

Blood Sugar levels in a Type 1 Diabetes Patient Over Time

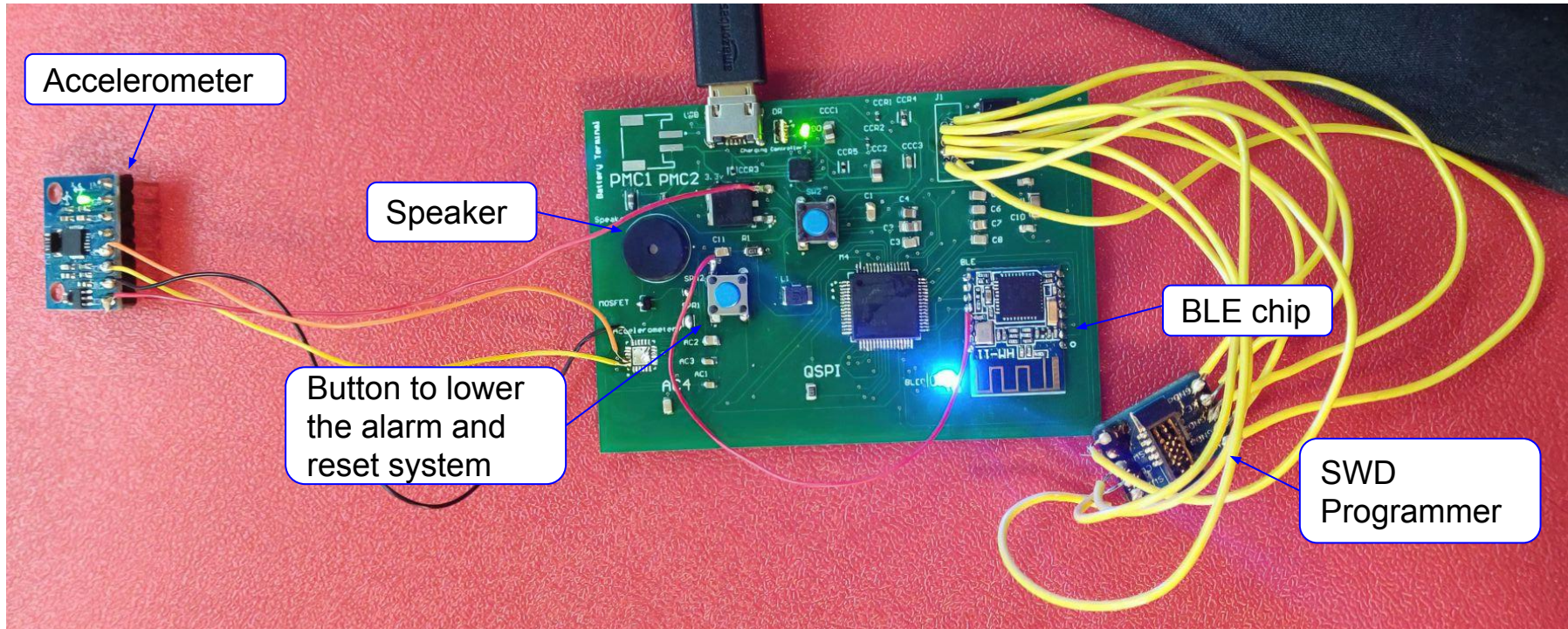


(Source: Unger J: Diabetes Management in Primary Care. 2nd ed. Philadelphia, Pa., Lippincott, Williams, and Wilkins, 2012.)

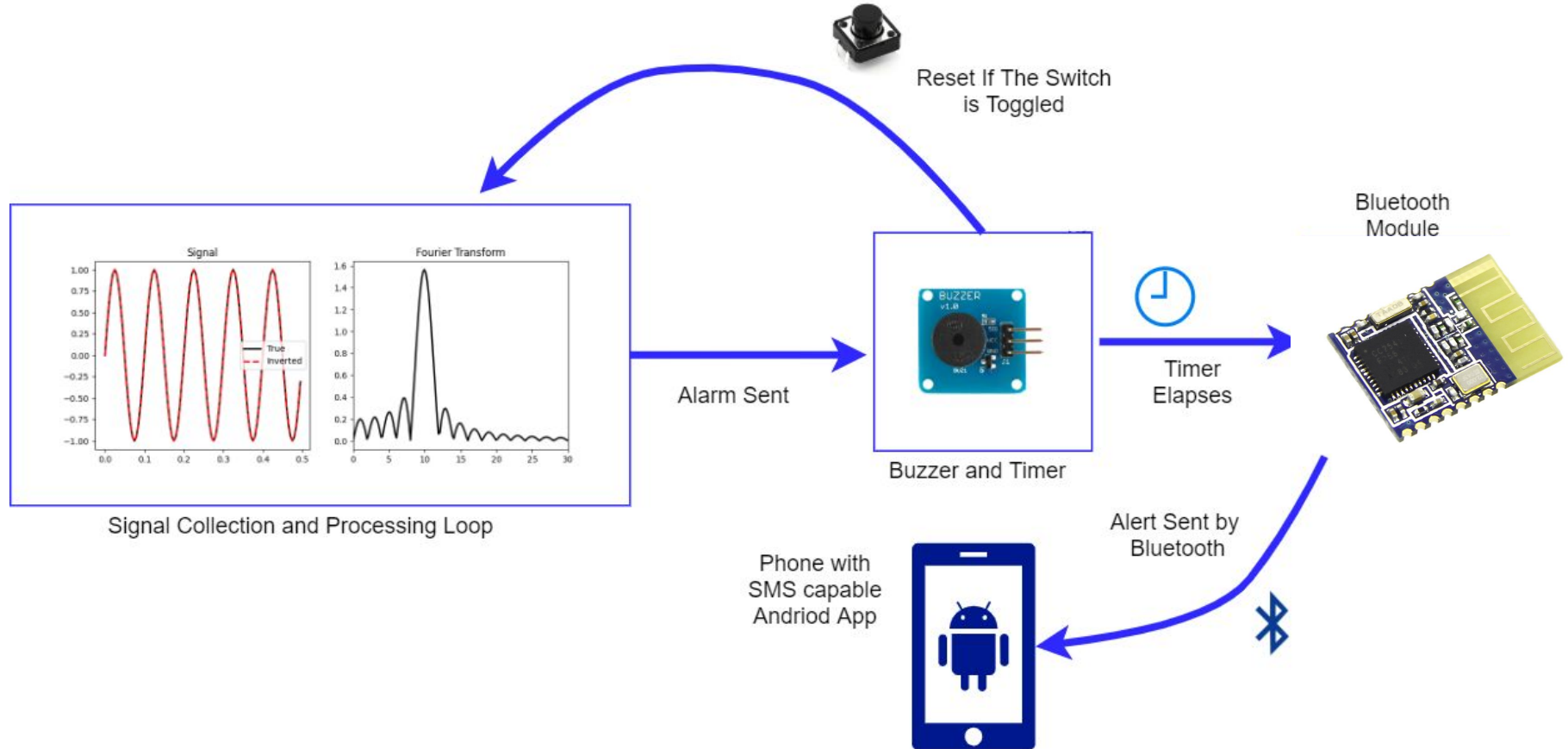
System Specifications

- Sense in range 8-12 Hz
- Have an alarm go off when threshold met for 15 seconds
- Send a message to someone if the event is occurring and alarm has not been disabled within 24 seconds
- Wearable and comfortable wrist strap
- Our SDP budget is the limit to the price of our solution (\$500)
- Multiple day battery life

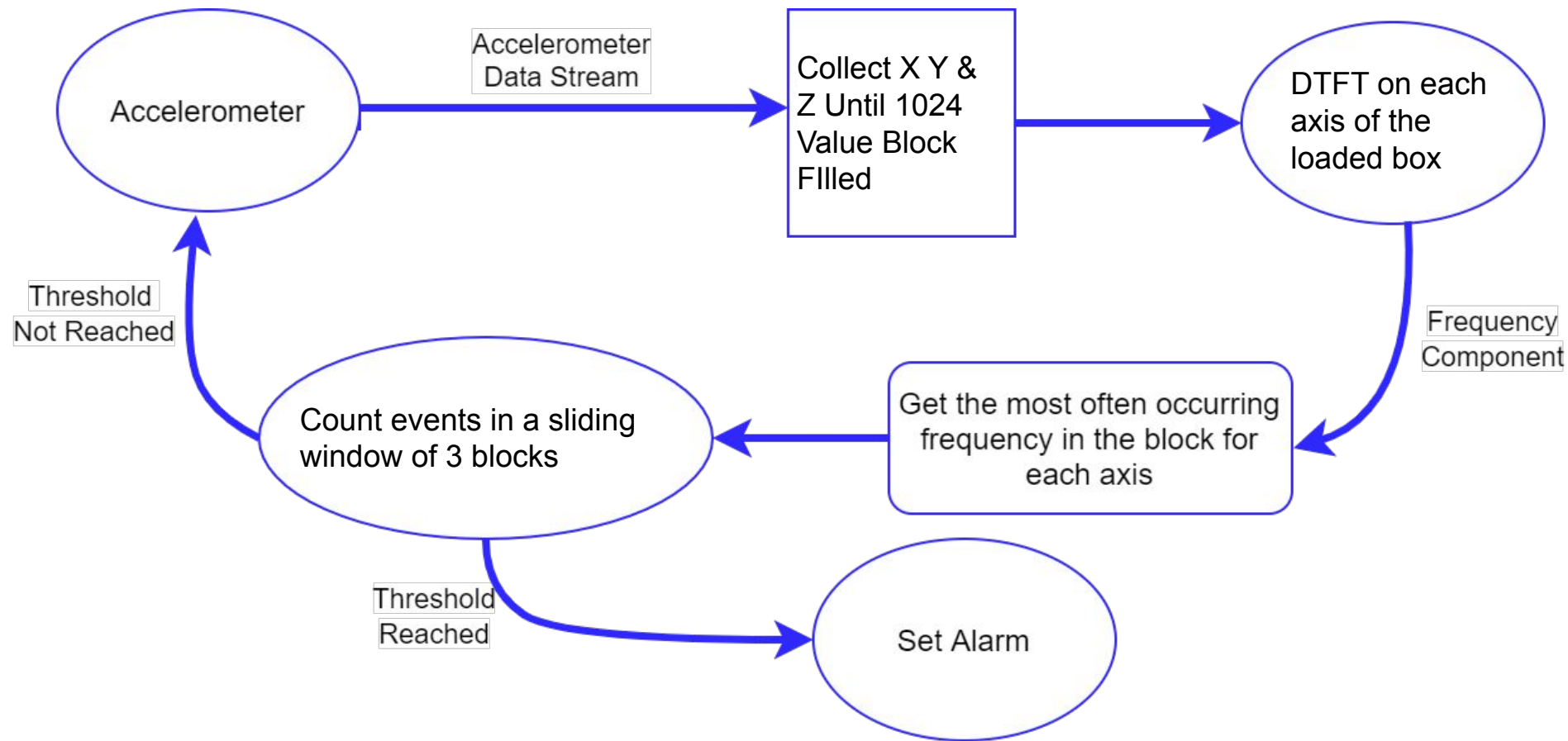
Documentation of Final Design



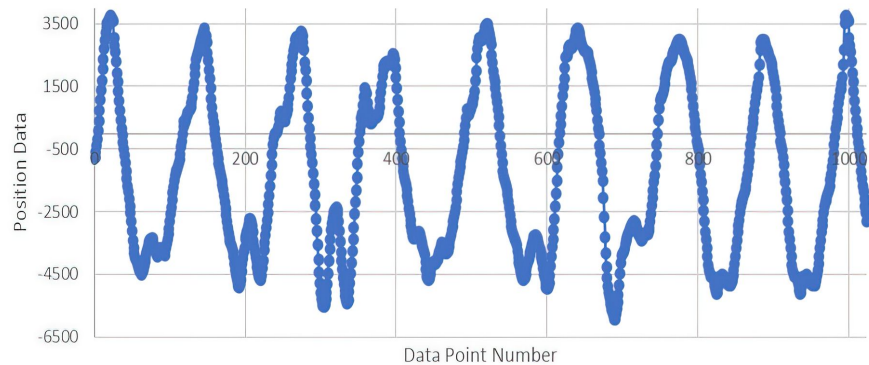
Updated Overall Design



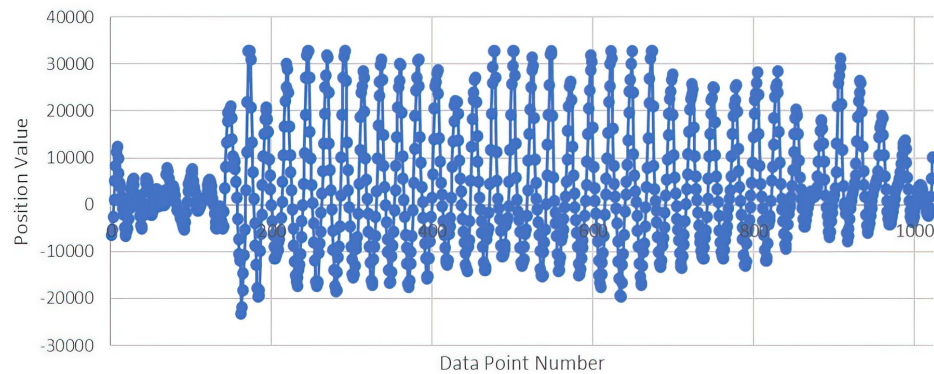
Updated Signal Processing



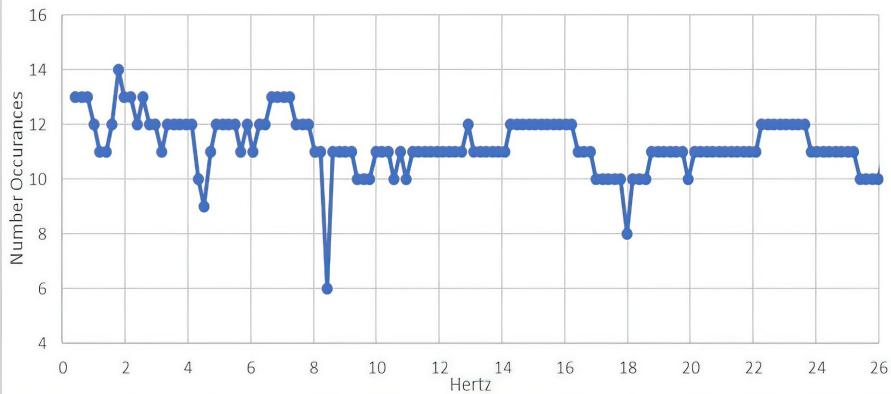
Running Raw Positional Data



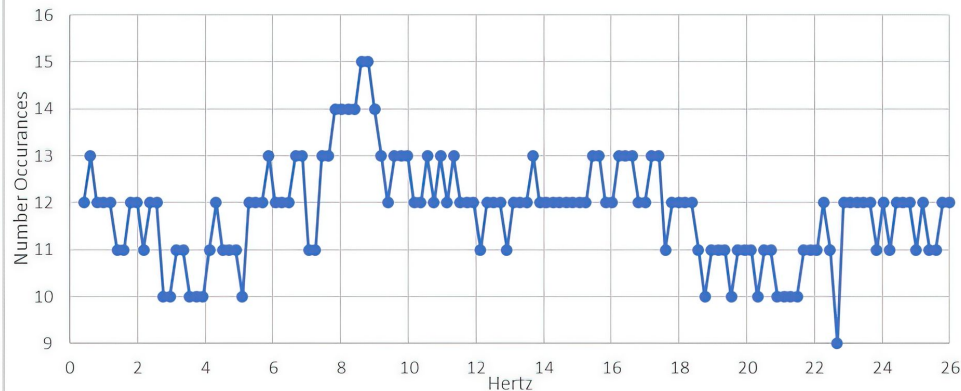
Shivering Raw Positional Data



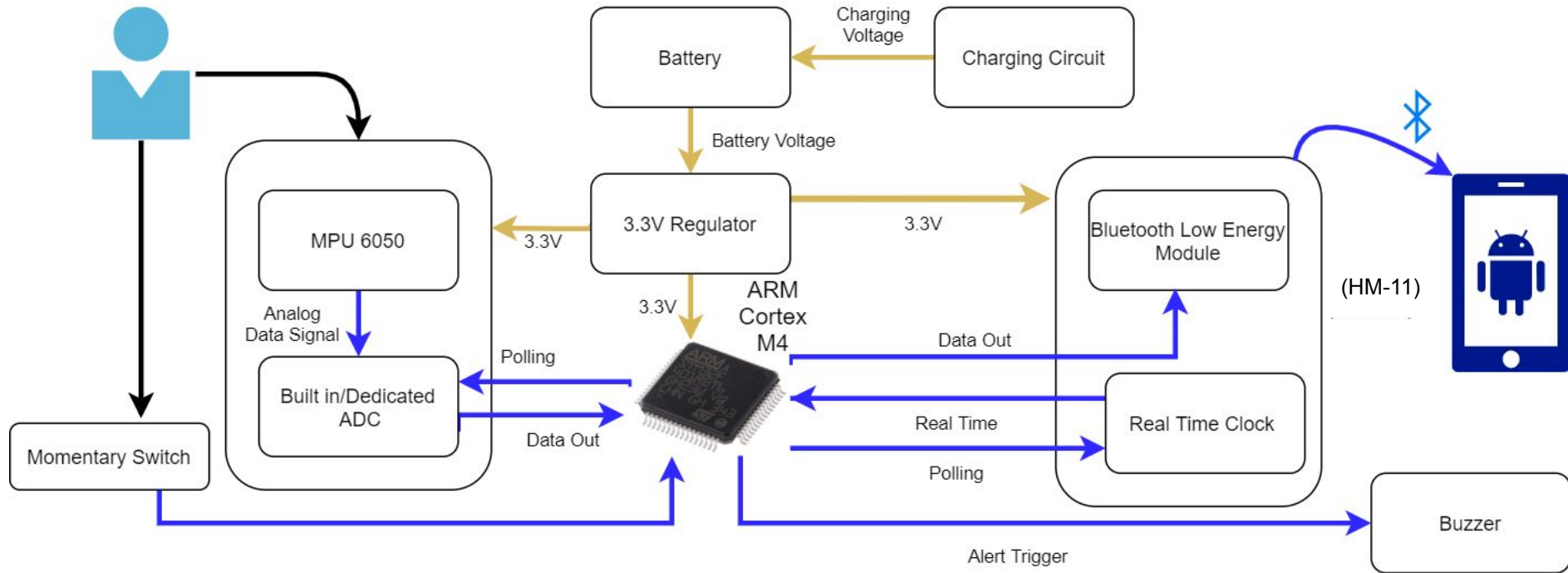
Running Spectrogram



Shivering Spectrogram

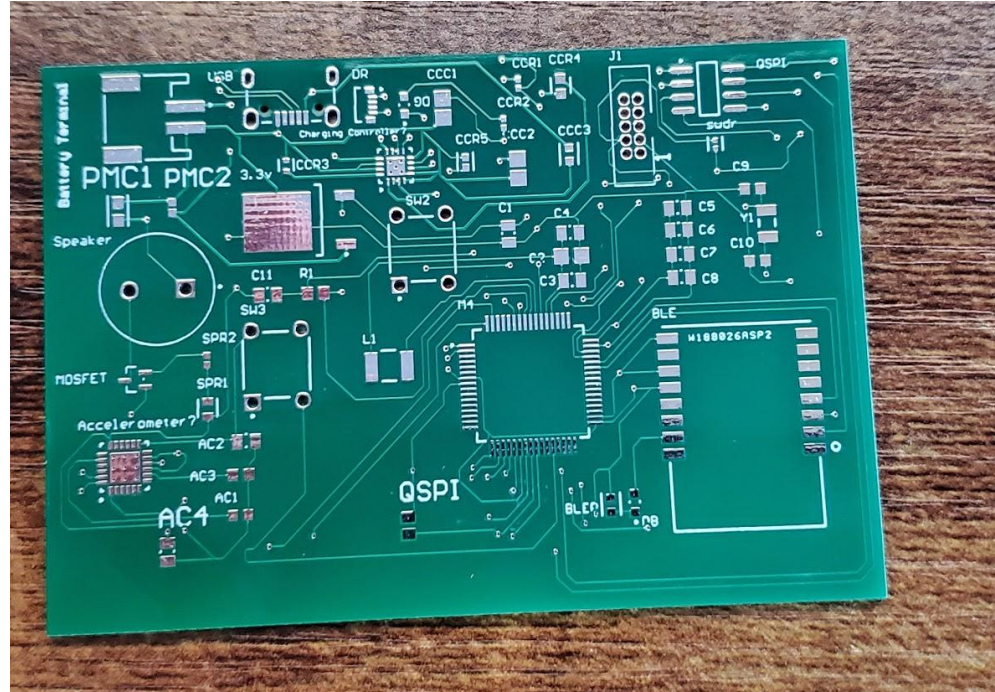


Updated Hardware Design



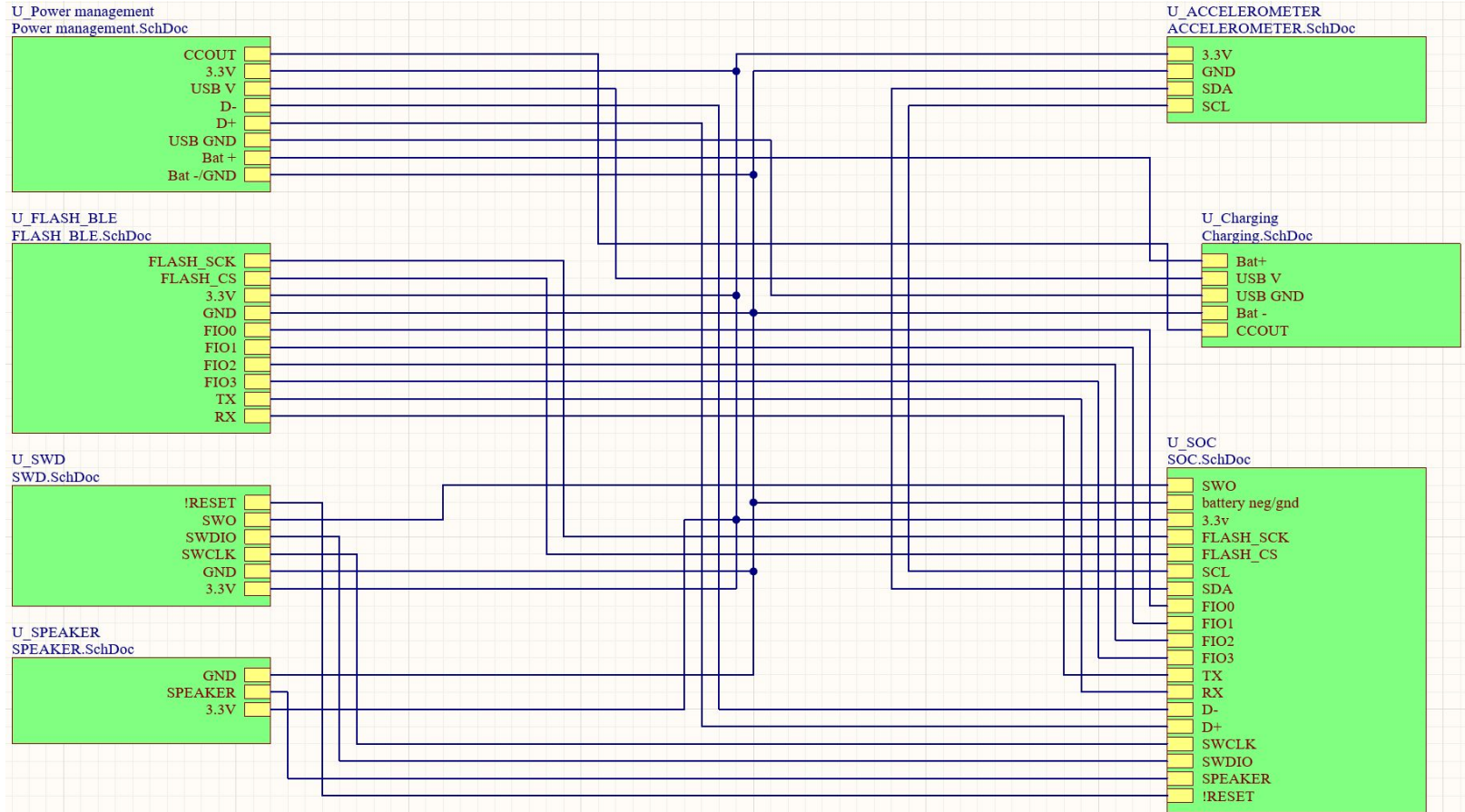
Custom PCB

- Errors found during assembly
 - unable to find workarounds for a variety of issues in design
 - Had to redesign and order new boards
- Rigid board to show functionality
 - Flex boards would not arrive in time

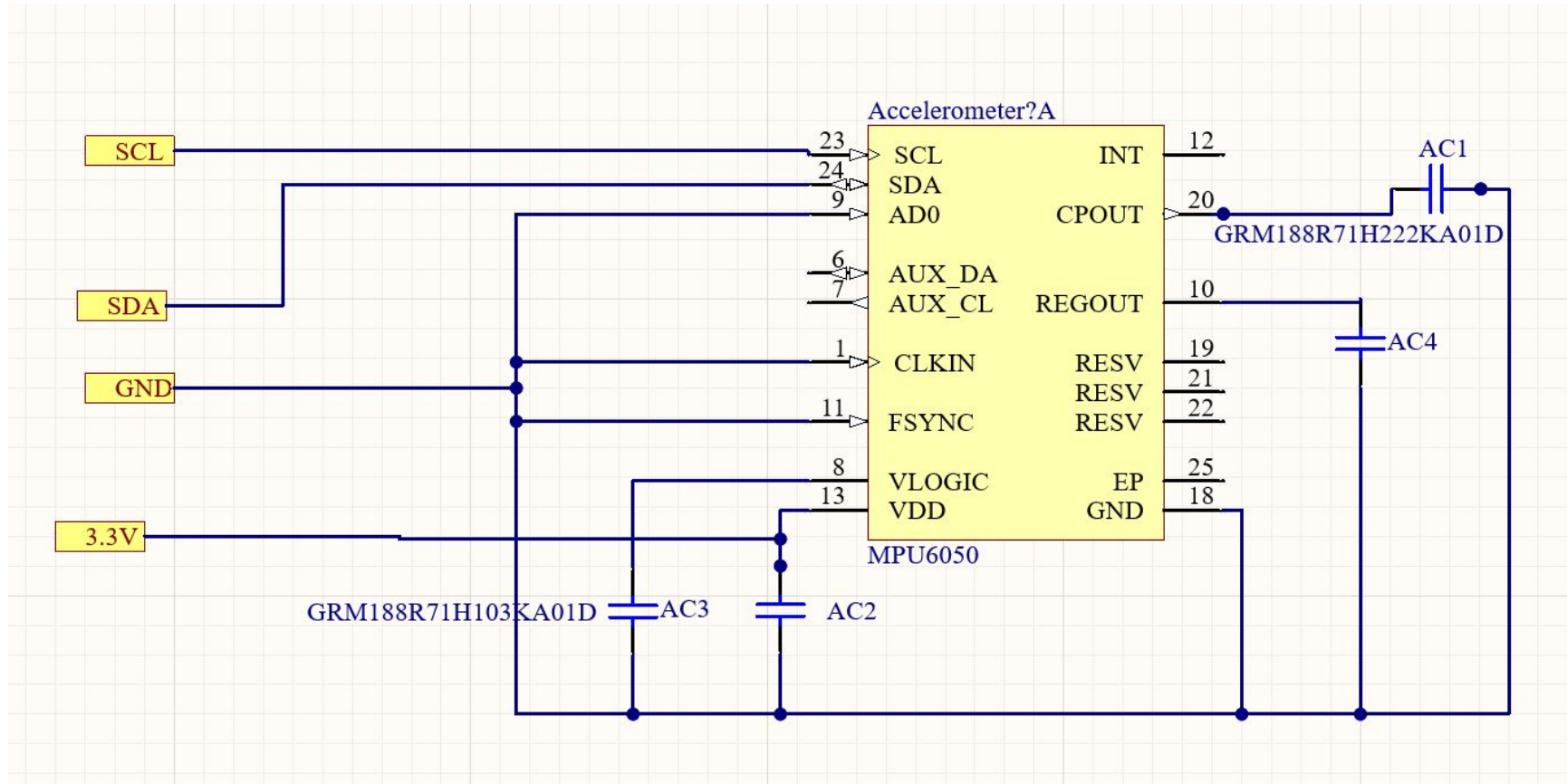




Main Schematic

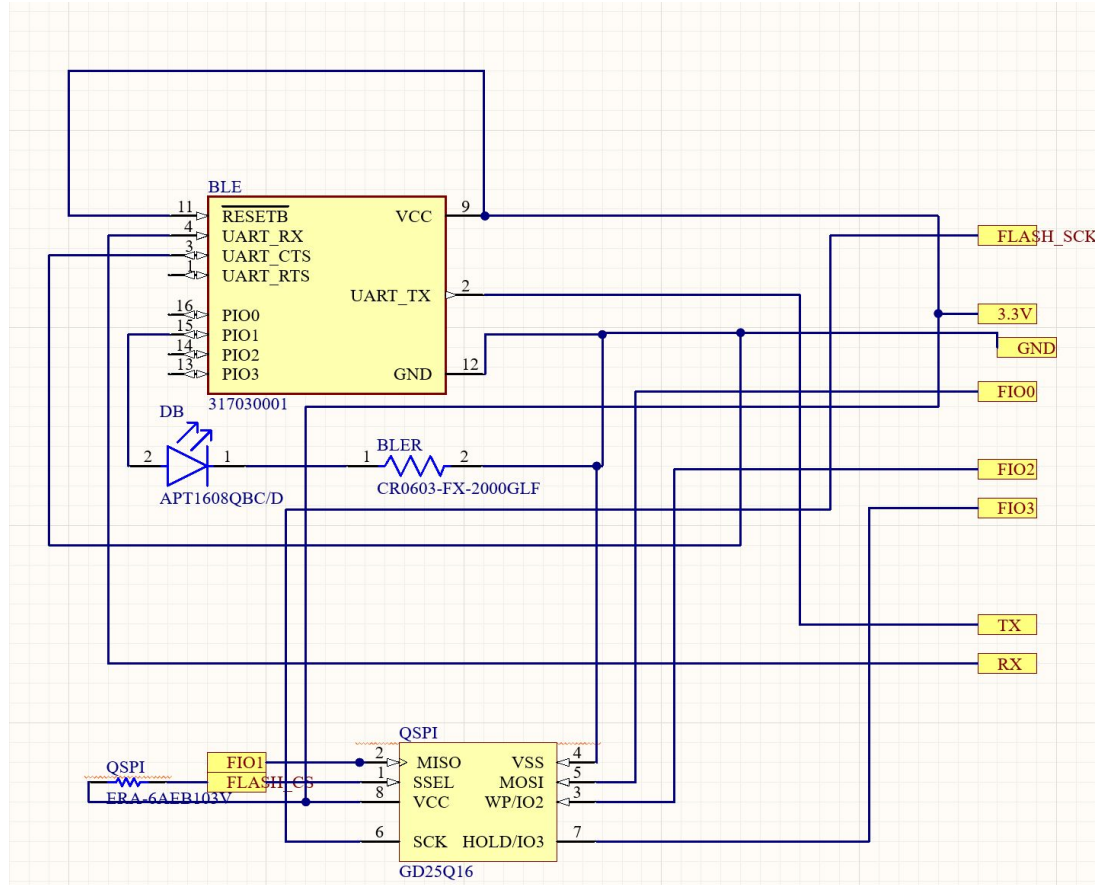


Accelerometer

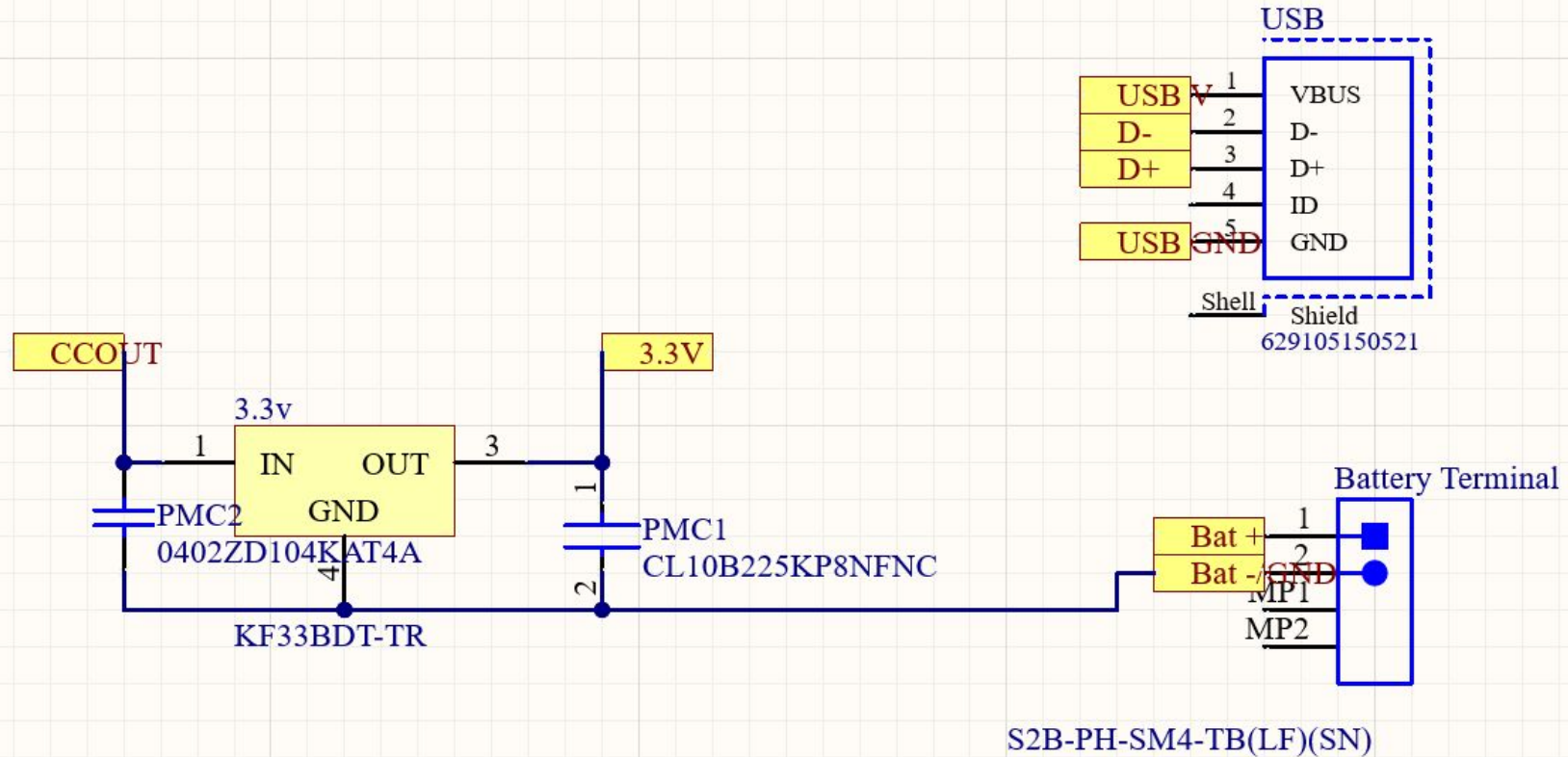




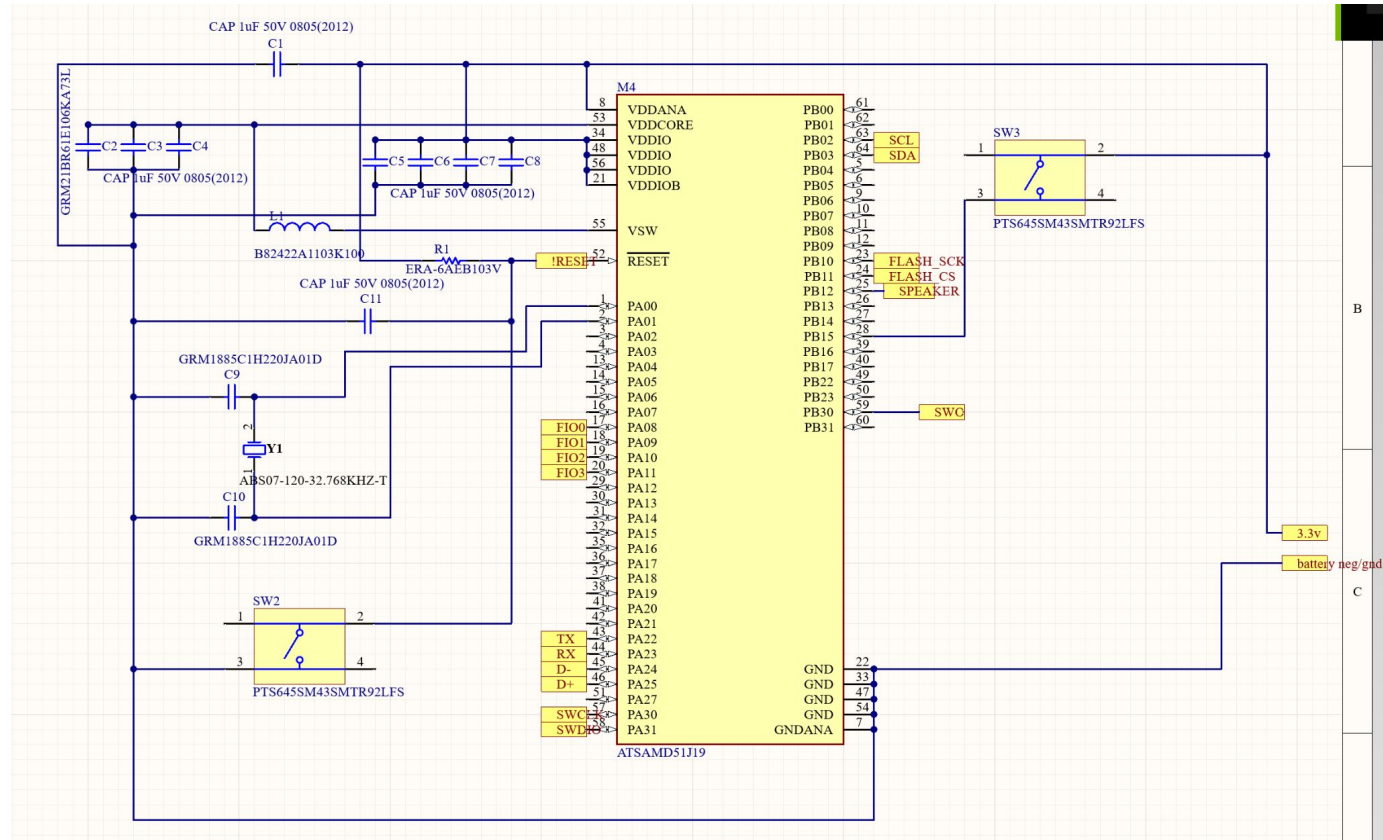
Flash and BLE Circuit



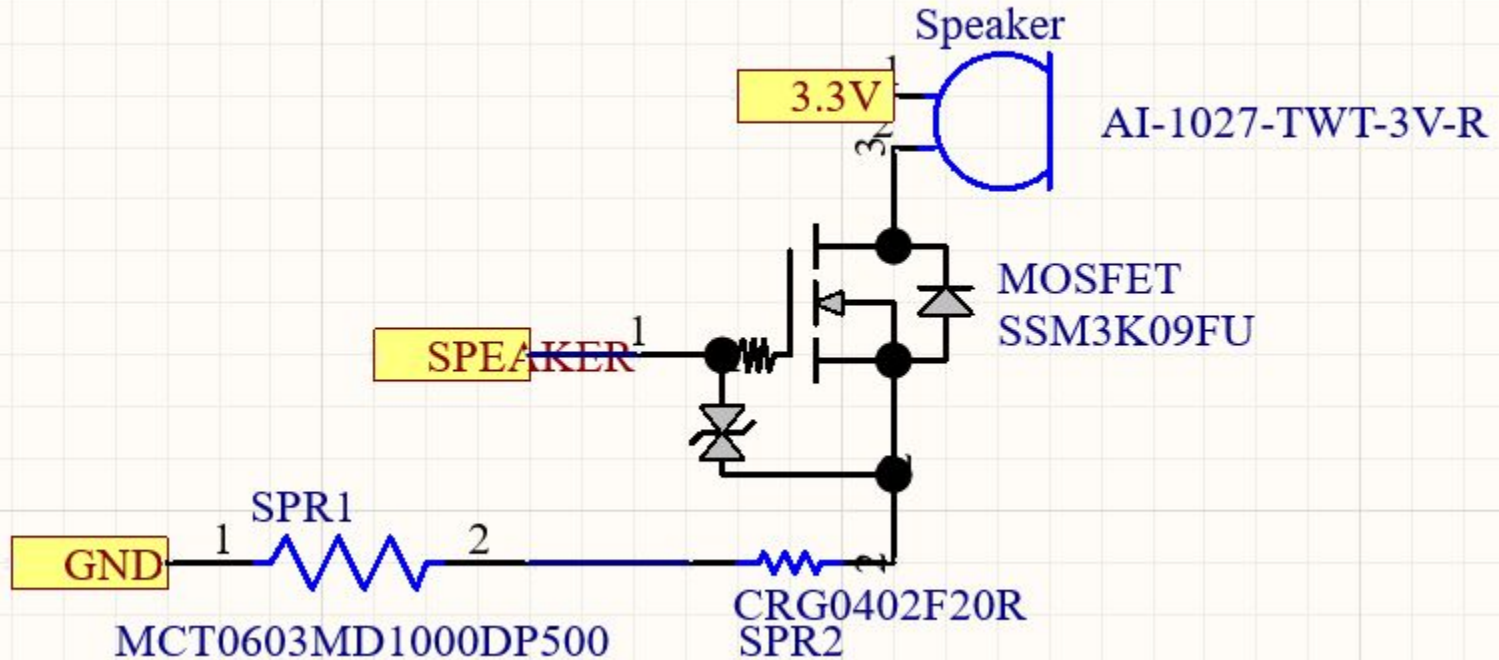
Power Management



SoC

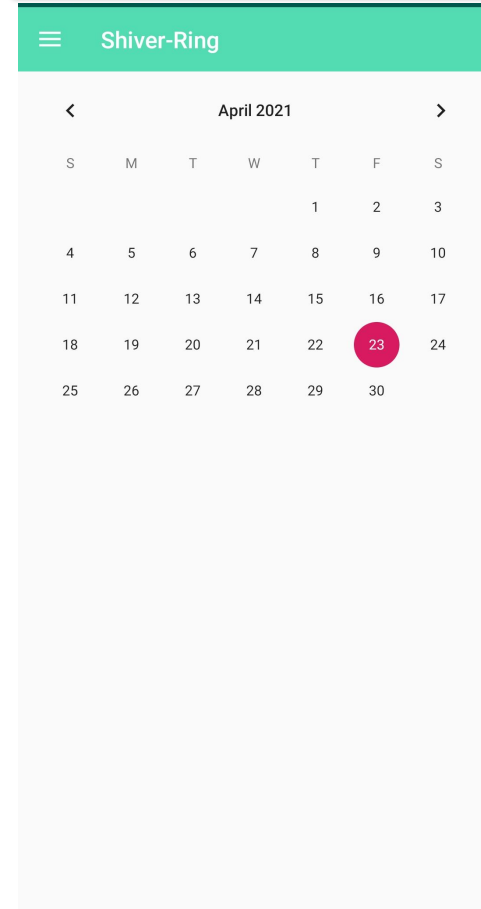


Speaker



Calendar integration

- Event triggers text
- Time is recorded and written to a file for that date
- Calendar reads data from date file
 - displays list of times of events for that day
- Top half - Calendar plugin
- Bottom half - listView



Multiple Phone Number Selection

The screenshot displays the 'Shiver-Ring' application on a mobile device. The status bar at the top shows the time as 17:35, a notification icon, and battery level at 83%. The app's header is green with a white menu icon and the title 'Shiver-Ring'. Below the header, there are three input fields labeled 'Phone Number 1', 'Phone Number 2', and 'Phone Number 3'. At the bottom of the screen, there are two large, light gray buttons: 'TEST+SAVE SMS NUMBERS' and 'CONNECT BLUETOOTH'. The bottom of the screen also shows the standard Android navigation bar with back, home, and recent apps icons.



Demo Time