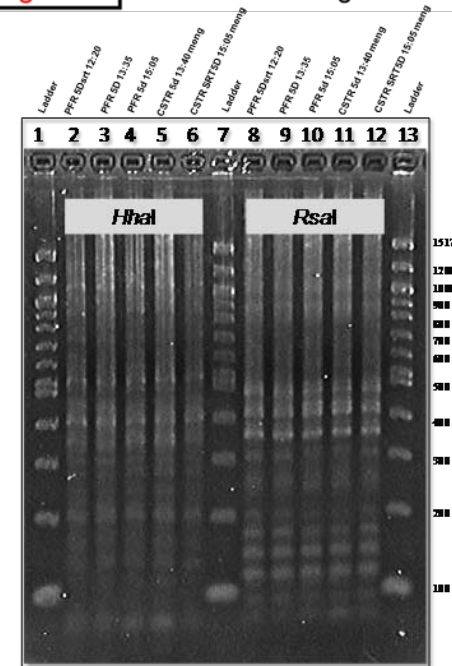
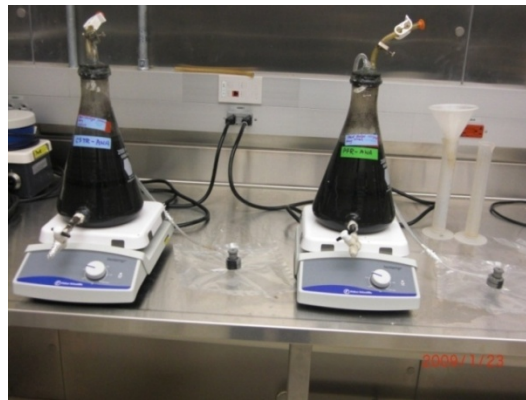
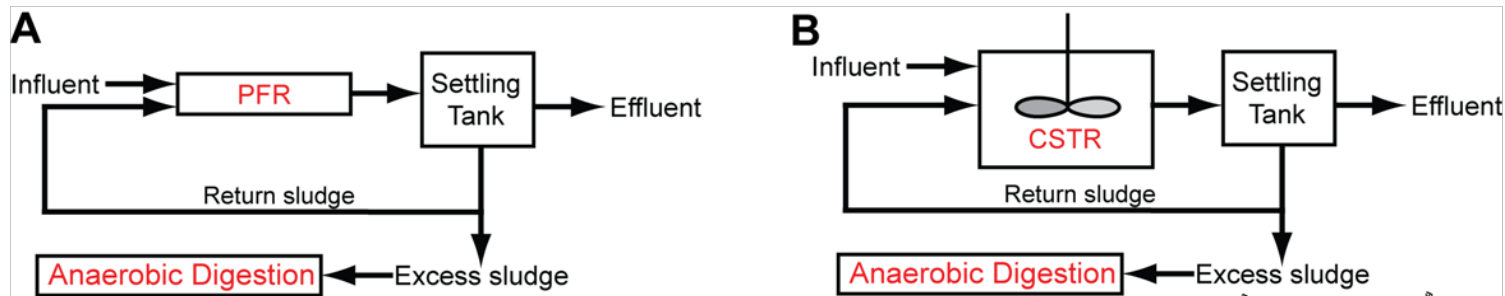


# Investigating the Link Between Sludge Physiology and Sludge Digestion



## Researchers

- Meng Wang (PhD candidate)
- Philip Teague (Master candidate)

## Funding Sources

- UMass CEE

## Synopsis

- Investigating effects of feeding scheme (reactor configurations), influent cations, and SRT on microbial physiology of activated sludge and its digestibility under anaerobic conditions
- Investigating effects of activated sludge characteristics on sludge pretreatment such as sonication and mechanical shearing
- Characterization of activated sludge physiology using mass mapping proteomics