

1340 Oven

This section contains illustrated parts breakdowns for the following 6890 GC components:

- Oven
- Oven flapper assembly
- CO₂ cryogenic cooling
- Liquid nitrogen cryogenic cooling

Oven assembly

Description	Part no.	Qty.
1. Oven door	G1530-60815	1
2. Fan blade, stainless steel, and set screw	05890-80270	1
3. Oven heater shroud assemblies:		1
–120V USA power	G1530-61610	
–200V Japan power	G1530-61620	
–220V Single phase power, Europe, and 208V USA power, single phase	G1530-61630	
–220V Single phase power, Hong Kong	G1530-61630	
–220V Single phase power, China	G1530-61630	
–220V China power, slow ramp	G1530-61230	
–220V Israel power	G1530-61630	
–230V Single phase power, Switzerland, 10 amp	G1530-61670	
–230V Denmark power, 10 amp	G1530-61670	
–230V Denmark/Switzerland power, 16 amp	G1530-61650	
–230V Continental Europe power	G1530-61650	
–240V Australia power	G1530-61640	
–240V South Africa/India power	G1530-61640	
–240V Great Britain/Ireland power	G1530-61640	
–240V USA power	G1530-61640	
–240V Australia power, slow ramp	G1530-61640	
4. Screws, M4 × 0.7, Torx T-20, chrome plated	0515-2711	4
5. Hex nut	0535-0043	3
6. Washer	2190-0712	6
7. Sensor door assembly	G1530-80670	1
8. Hinge pin	G1530-20685	1
9. Oven motor assembly	G1530-61310	1
10. On/Off switch rod	G1530-40010	1
11. Keyboard bezel assembly	G1530-60745	1
NS Rubber keypad	G1530-40095	1
NS Keyboard flex membrane assembly	G1530-80590	1
NS Keyboard display cable	G1530-60540	1
12. Keyboard display 4 × 20 UF	G1530-80000	1
13. Keyboard window bezel (plastics)	G1530-61320	1
NS Glacier grey touch-up paint	6010-1497	–
NS Oven sensor	G1530-61030	
NS Column hanger	1460-1919	

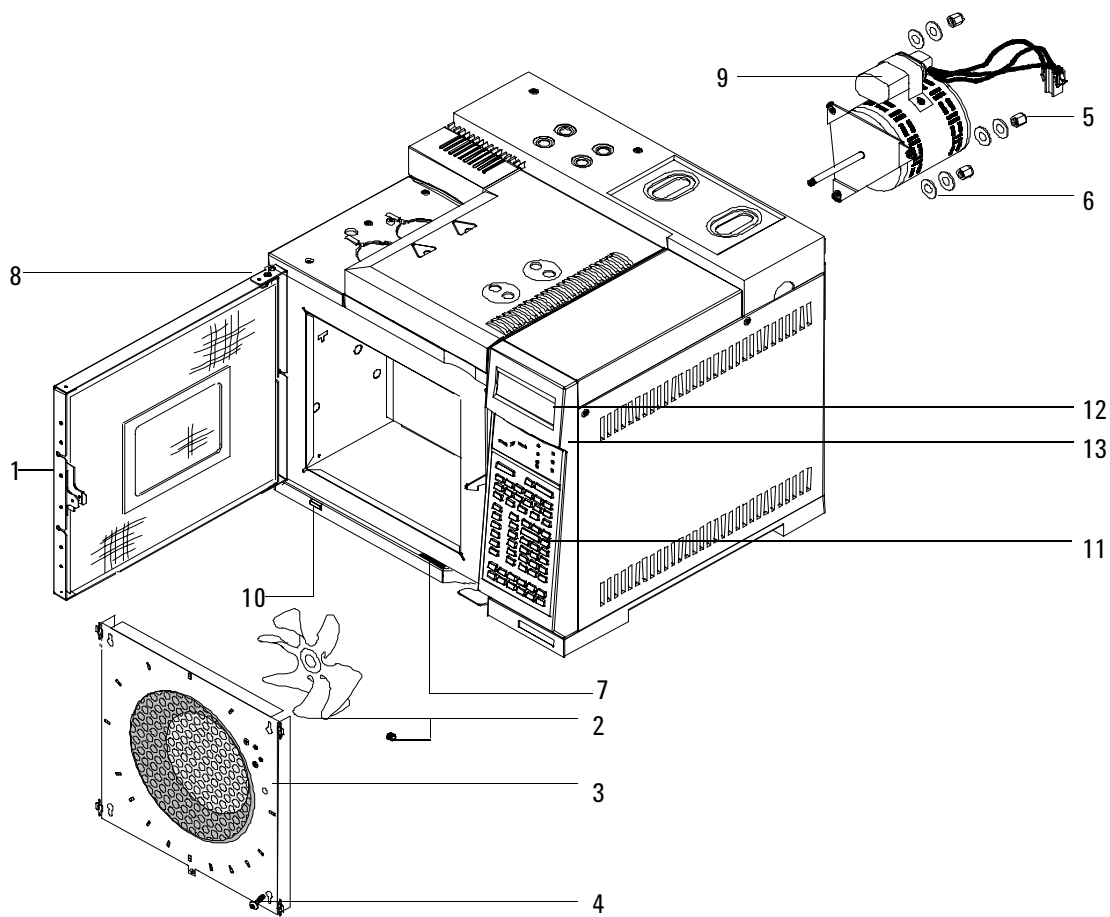


Figure 1340-1 Oven

Oven flapper assembly

Part no. G1530-60770

Description	Part no.	Qty.
1. Dual duct assembly	G1530-80680	1
2. Flapper shaft assembly	G1530-80560	1
3. Screw, Torx T20, M4 × 12 mm	0515-2496	4
4. Stepper motor assembly	G1530-60940	1
5. Screw, Torx T10, M3 × 8 mm	0515-0655	2

CO₂ cryogenic cooling

Description	Part no.	Qty.
1. LCO ₂ blast brazement	G1535-80550	1
2. Tee-union, brass	0100-0090	1
3. 1/8-inch Male conn. w/o O-ring	G1543-80025	1
4. Screw, MS 8-32,.312 LG	2510-0043	2
5. Cryo bracket	G1565-00010	1
6. Gland seal, LCO ₂	G1565-20590	1
7. CO ₂ cryo valve	G1565-60545	1
8. CO ₂ cryo inline filter	3150-0602	1
9. CO ₂ inlet tube	G1565-20600	1
10. Cryo blast restrictor weldment	G1565-80590	1
11. LCO ₂ weldment	G1565-80505	1
12. Clamp screw	G1565-20560	1
NS Scr-mach T-20, Torx, M4 × 12 mm	0515-2496	2
NS TFE seal	G1565-20840	1
NS CO ₂ cryogenic kit	G1565-65510	–
NS LCO ₂ cryo blast kit	G1565-65520	–
NS CO ₂ cryo VLV/Dual blast assembly	G1565-65521	–

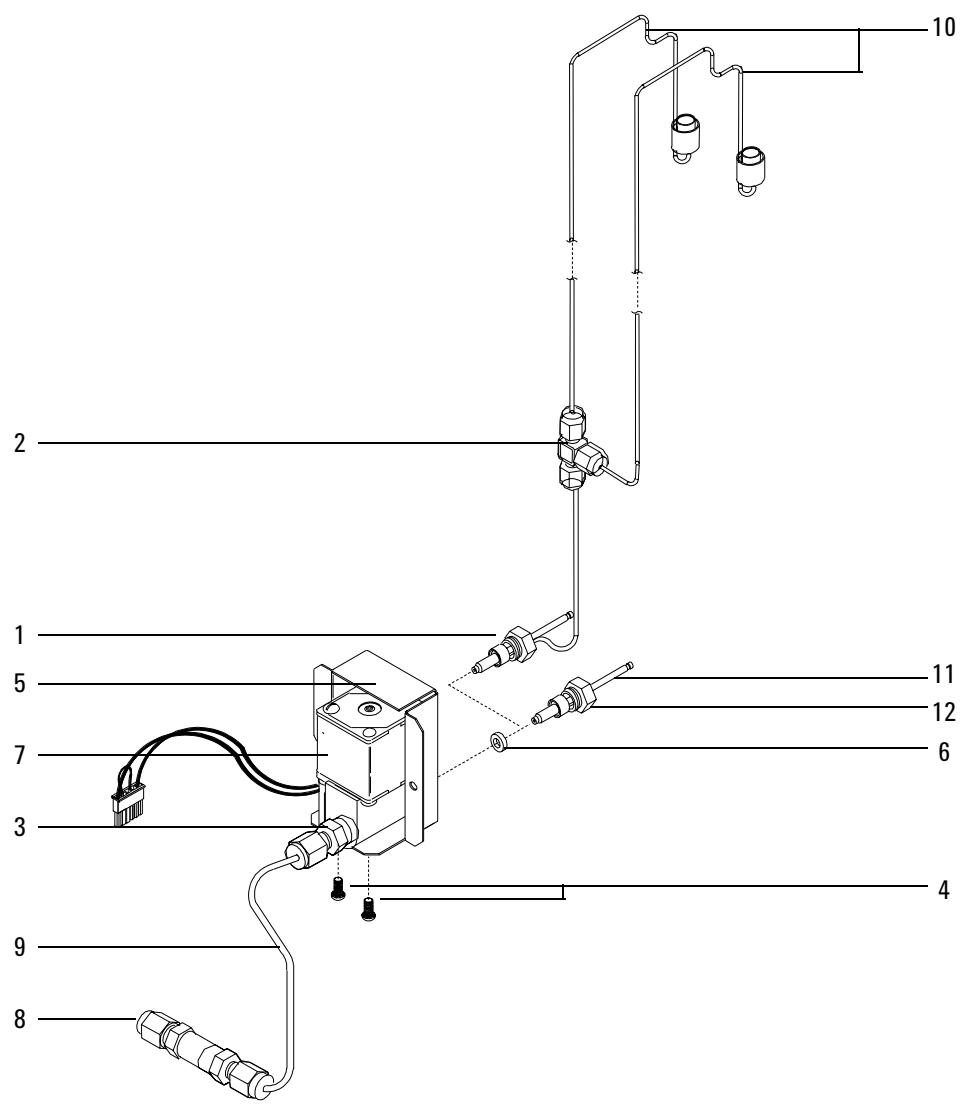


Figure 1340-3 CO₂ cryogenic cooling

Liquid nitrogen cryogenic cooling

Description	Part no.	Qty.
1. LN ₂ blast brazement	G1566-80535	1
2. Tee-union, brass	0100-0090	1
3. Connector – male	0100-0208	1
4. Screw, MS 8-32,.312 LG	2510-0043	2
5. Cryo bracket	G1565-00010	1
6. LN ₂ restrictor tube	G1566-20575	2
7. N ₂ cryo valve	G1566-60557	1
8. Liquid N ₂ nozzle	19310-20500	1
NS Scr-mach T-20, Torx, M4 × 12 mm	0515-2496	2
NS Tape – Industrial	0460-0016	–
NS N ₂ cryo blast	G1566-65507	–
NS N ₂ cryo VLV/Dual blast assembly	G1566-65508	–
NS N ₂ cryogenic kit	G1566-65517	–

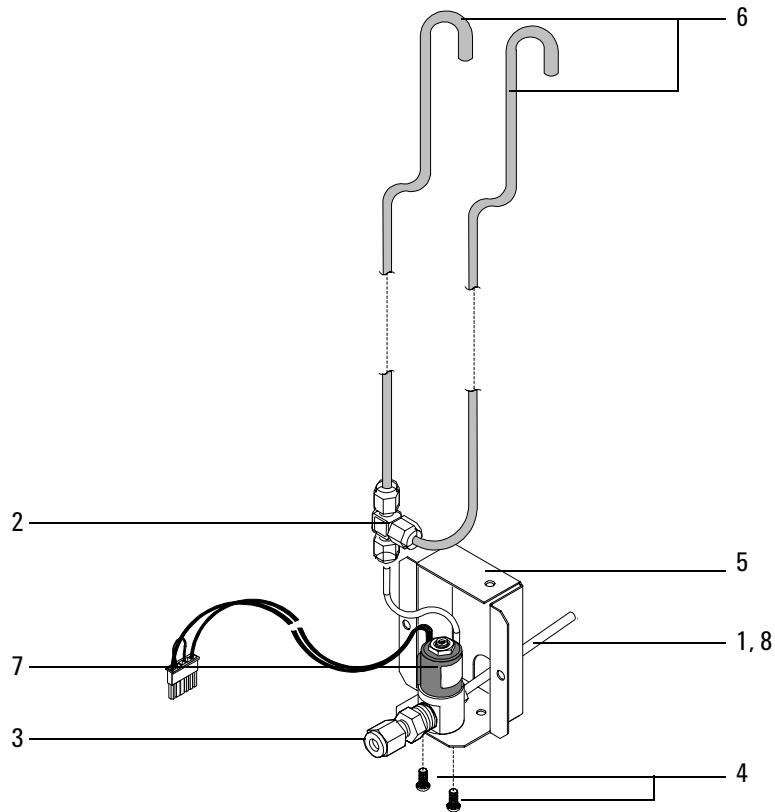


Figure 1340-4 Liquid nitrogen cryogenic cooling

