

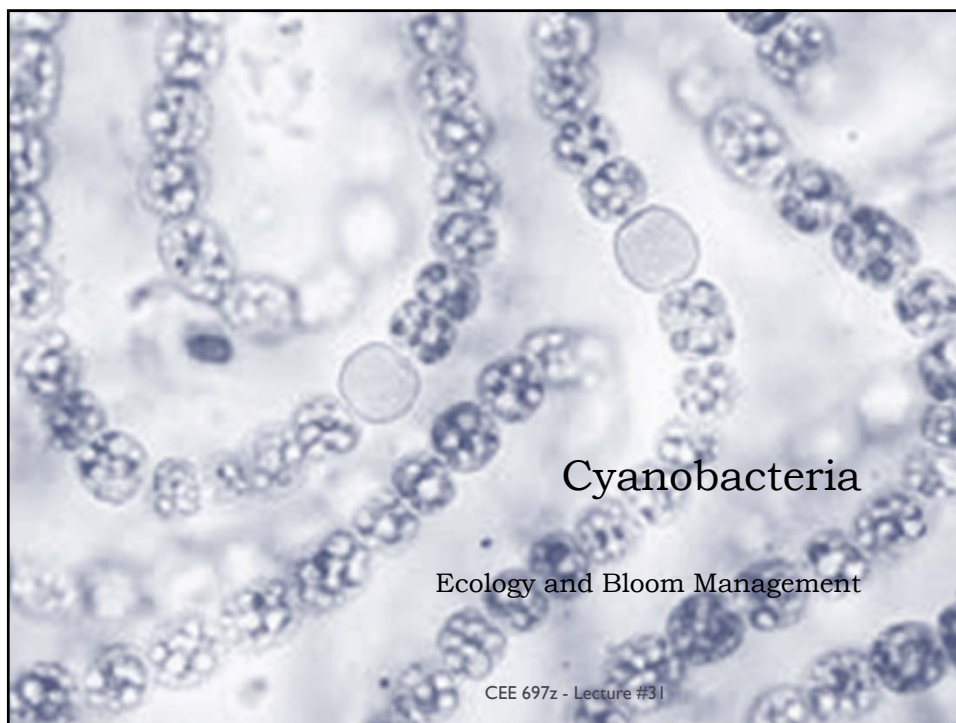
[Print version](#)

CEE 697z
*Organic Compounds in Water and
Wastewater*

Cyanotoxins
Aquatic Ecology and In-situ Control

Lecture #31

CEE 697z - Lecture #31



Cyanobacteria

Ecology and Bloom Management

CEE 697z - Lecture #31

R3

Cyanobacteria are Ubiquitous

CEE 697z - Lecture #3 |

Ecology: Adaptations

- ▶ Gas-filled cavities allow cyanobacteria to float to the surface or within the water column based on light conditions and nutrient levels
 - ▶ E.g. *Anabaena flos-aquae*
 - ▶ Leads to concentration of cyanobacteria on surface (creation of "scum")
- ▶ Nitrogen fixation
- ▶ Ability to resume photosynthesis after periods of light exclusion and dehydration

▶ Flores & Herrero, 2010
CEE 697z - Lecture #3 |
Nature Reviews | Microbiology

Slide 3

R3 Get more pictures of habitat!
Find pictures of cyanobacteria in flowing streams!
RWeiter, 11/13/2014

What is a “bloom”?

- ▶ “a significant production of biomass over a short period of time correlated with a diminution of phytoplankton diversity”
- ▶ Often appears as a dense layer of cells at the surface of the water
- ▶ May also be
 - ▶ dispersed through the water column with no surface “scum”
 - ▶ located in the sediments (benthic)
- ▶ Diversity of genera often low
- ▶ Primarily occur in lentic surface waters

▶ CEE 697z - Lecture #31

Ecology: Bloom Impacts

- ▶ Toxic effects
 - ▶ Humans, dogs, livestock, fish, birds...
- ▶ Oxygen levels
 - ▶ Elevated during the day due to photosynthesis
 - ▶ Drop due to
 - ▶ Nightly respiration
 - ▶ Bloom decay
 - ▶ Hypoxic conditions may result in plant and animal die-off
- ▶ Water temperature elevation
- ▶ Food web disruption

▶ CEE 697z - Lecture #31

R4

Monitoring for CyanoHABs in Massachusetts

- ▶ Health risk rises with cell counts
 - ▶ With some uncertainties
- ▶ Measures on which action can be taken:
 - ▶ Observation of visible scum or mat layer
 - ▶ Total cell count of cyanobacteria (total cells/mL of water)
 - ▶ Threshold = 70,000 cells/mL water
 - ▶ Concentration of cyanotoxin
 - ▶ Threshold = 14 ug microcystin/L water

[MDPH Guidelines for Cyanobacteria in Freshwater Recreational Water Bodies in Massachusetts](#)

CEE 697z - Lecture #3 I

Actions taken in Massachusetts

- ▶ State actions
 - ▶ Post advisories against contact with water
 - ▶ Advisories may be lifted after two consecutive and representative sampling rounds one week apart demonstrate cell counts *and* toxin levels below those at which an advisory would be posted.
- ▶ City/Town
 - ▶ Rope off water body and/or close bathhouses
 - ▶ Bloom treatment

Algae Information

Cyanobacteria Advisories in Massachusetts Current as of October 30, 2014

- Congamond Lake - Southwick
- Lake Wampatuck - Hanson
- West Monponsett Pond - Halifax, Hanson



<http://www.mass.gov/eohhs/gov/departments/dph/programs/environmental/health-topics/beaches-algae/algae-information.html>

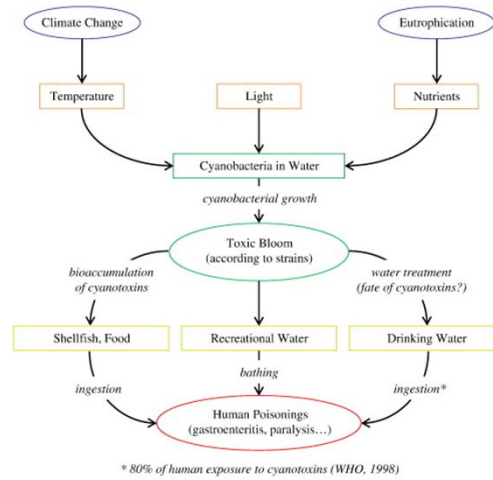
CEE 697z - Lecture #3 I

Slide 7

R4 Add photos of ponds I sampled
RWeiter, 11/13/2014

Factors Affecting Bloom Formation

- ▶ Light intensity
- ▶ Total sunlight duration
- ▶ Nutrient availability
 - ▶ P & N
- ▶ Water temperature
- ▶ pH
- ▶ Precipitation events
- ▶ Water flow
- ▶ Water column stability



CEE 697z - Lecture #31

Eutrophication

- ▶ CyanoHABs are stimulated by excess nutrient loading
- ▶ P is often the limiting nutrient for in freshwater
- ▶ N is limiting in estuaries and marine systems
- ▶ Evidence exists for co-limitation by N & P

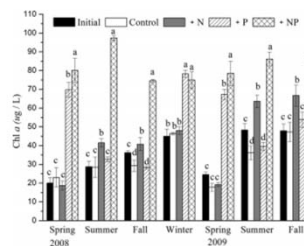


Fig. 6 - Phytoplankton biomass (chlorophyll a) responses in bioassays conducted in May, July, October, and December 2008 and May, July and October 2009. Water samples for bioassays were collected from the surface at the Inner Bay location in Melliang Bay. Initial chlorophyll a content is shown. Responses were for 3-day incubations in spring, summer, and fall, 6-day incubations in winter 2008, and 2-day incubations in spring, summer, and fall 2009. Mean values are shown. Error bars represent $\pm 1SD$ of triplicate samples. Differences between treatments are shown based on ANOVA post hoc tests ($a > b > c$; $p < 0.05$).

Lake Taihu, China

▶ Paerl et al., 2011

CEE 697z - Lecture #31

Atmospheric CO₂ Concentrations

- ▶ CyanoHABS exhibit high demand for CO₂ → limitation
- ▶ Buoyant CyanoHABS can directly intercept CO₂ diffusing into the water from the atmosphere
- ▶ Photosynthetic potential is largely determined by atmospheric CO₂ concentration

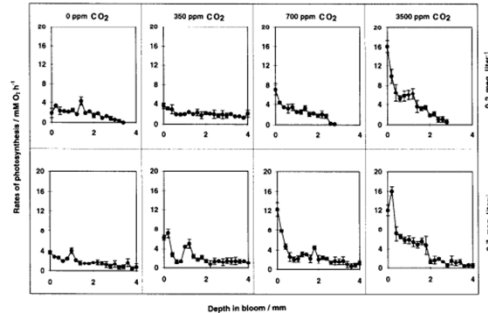


Fig. 3. Gross rates of photosynthetic O₂ production, corresponding to the oxygen profiles shown in Fig. 2 at an alkalinity of 0.2 meq liter⁻¹ (top) and 0.7 meq liter⁻¹ (bottom) under variable CO₂ concentrations in the headspace of the bloom—0 ppm: air (350 ppm); twice the amount of CO₂ in air (700 ppm); and 10× the amount of CO₂ in air (3,500 ppm). The error bars denote the standard error of the mean.

▶ *Ibelings and Maberly, 1998*

CEE 697z - Lecture #31

Climate Change

- ▶ Increased temperatures
- ▶ Extreme patterns in precipitation
 - ▶ Increasing severity and length of droughts
 - ▶ Large precipitation events

▶ CEE 697z - Lecture #31

Increased Temperatures

- ▶ Faster growth
- ▶ Longer ice-free growing season
- ▶ Decreased viscosity
 - ▶ Decreased resistance to migration
- ▶ Increased stability of stratification
- ▶ Exacerbate bottom water hypoxia
 - ▶ May stimulate internal nutrient loading

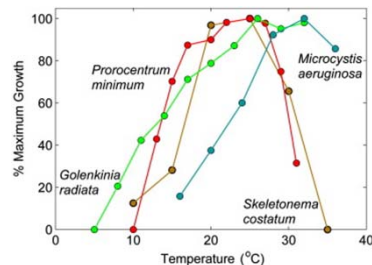


Fig. 4 – Effects of temperature on species-specific growth rates of a representative Cyanobacteria species (*Microcystis aeruginosa*) vs. commonly encountered eukaryotic algal bloom species, including the chlorophyte *Golenkinia radiata*, the diatom *Skeletonema costatum*, and the dinoflagellate *Prorocentrum minimum*. Growth rate data are from Reynolds (2006), Grzebyk and Berland (1995), and Yamamoto and Nakahara (2005).

Implications: cyanoHABs, once thought to be a tropical phenomenon may become more common in temperate as well as tropical environments

▶ Paerl & Paul, 2012

CEE 697z - Lecture #31

Changes in Precipitation

- ▶ Low-flow droughts promote CyanoHABs
 - ▶ Less mixing
 - ▶ Longer residence time
- ▶ Salination
 - ▶ Stronger stratification
 - ▶ Some freshwater genera tolerate high salinity
- ▶ Intense precipitation events
 - ▶ Enrichment of nutrients through erosion, surface runoff, and groundwater discharge
 - ▶ Flushing & mixing of water column
 - ▶ May simply pass cyanobacteria downstream

▶ CEE 697z - Lecture #31

Summary

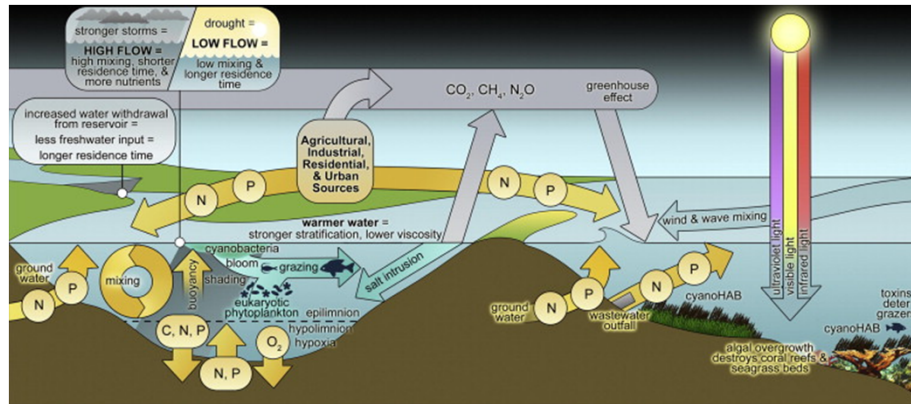


Fig. 3. Conceptual figure, illustrating the environmental processes that control cyanobacterial blooms, including man-made management actions and impacts of climate change.

► Paerl & Paul, 2012

CEE 697z - Lecture #31

Summary

Climate and eutrophication effects

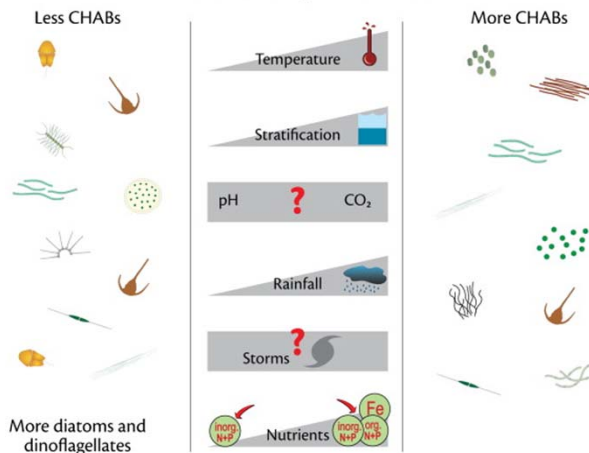


Fig. 2. Eutrophication and potential effects of climate change on Cyanobacterial Harmful Algal bloom (CHAB) abundance.

► O'Neil et al. 2012

CEE 697z - Lecture #31

Eradication of Blooms

- ▶ **Options:**
 - ▶ Chemical treatment of blooms
 - ▶ Aeration and mixing
 - ▶ Sediment dredging
 - ▶ Sediment inactivation (us. Using aluminum sulfate)

▶ CEE 697z - Lecture #31

Chemical Treatment

- ▶ **Algaecides:** Copper sulfide, hydrogen peroxide, ...
 - ▶ Reduce cyanobacteria biomass by interfering with cell processes
 - ▶ Negative impacts
 - ▶ Short term solution: bloom may recur within weeks
 - ▶ Toxicity to non-target organisms
- ▶ **Flocculants**
 - ▶ Cause coagulation and sedimentation the cyanobacteria layer
 - ▶ Reduce lysis and resulting cyanotoxin release
 - ▶ Prevent regrowth and resuspension of the cyanoHAB

▶ CEE 697z - Lecture #31

Algaecides

▶ Algaecides induce cell lysis, leading to release of intracellular toxins

Table 1. Recommended dosages for lake water and dosages of the six chemicals used in the three Batches (mg l⁻¹). The dosages used in the batch experiments were higher than recommended, as the phytoplankton biomass (as dry wt) was 80-fold more concentrated than in the lake water. NA indicates the chemical was not used in that batch experiment

Chemical	Recommended dosages	Dosages used		
		Batch 1	Batch 2	Batch 3
Reglone	2-3.9	20	20	20
NaOCl	0.5-1.5	NA	44	44
KMnO ₄	1-3	10	10	10
Simazine	0.5	5	15	NA
Alum	132	200	200	300
Lime	25-200	100	100	200

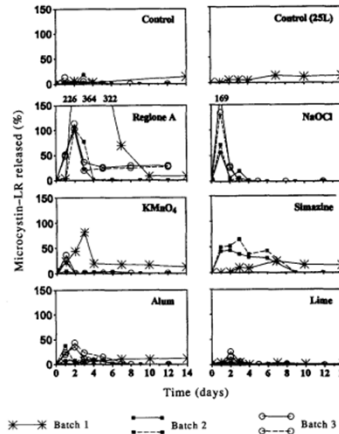


Fig. 1. Release of MCLR into the surrounding water after chemical treatments. The amount released is expressed as a percent of detectable MCLR within the cyanobacterial cells at day 0. Note that one lime treatment and one control in Batch 1 were carried out in 25-liter jars. Replicates for Batches 2 and 3 are shown.

▶ Lam et al., 1995

Table 1
Summary of advantages and disadvantages of chemical measures for management of cyanobacterial blooms.

Method or technique	Advantages	Disadvantages
Metals with the mode of action based on cell toxicity (copper, silver)	- Extremely low price	- Toxicity against non-target species
Metals as coagulation agents (aluminum, iron, calcium)	- Extremely low price - Low toxicity against non-target species if used correctly - Suitable for phosphorus removal as well - Long-term effects if used in water bodies with high residence time	- Accumulation in the environment - Release of toxins after treatment - Can influence pH values in water body - Short-term effect if used in water bodies with low residence time
Hydrogen peroxide	- Low price - Low toxicity for non-target species - Fast degradability - Selective towards cyanobacteria	- Risky manipulation with concentrated hydrogen peroxide - Fast degradability (short time of action)
Phthalocyanines	- High toxicity towards photoautotrophs - Biodegradable	- Insufficient knowledge about toxicity towards fish and macrophytes - Blue/green coloration
Titanium dioxide and other insoluble photosensitizers	- Toxicity towards photoautotrophs via ROS production	- Insoluble in water
Herbicides (diuron, endothal, atrazine, simazine and others)	- Low price - Toxicity towards photoautotrophs	- Toxicity against non-target species - Accumulation in the environment - Toxic residues - Release of toxins after the treatment
Chemicals derived from natural compounds	- Effective in low concentrations - Biodegradable - Natural products	- Preparation of extracts or isolation of alkaloids in high amounts - Unknown toxicity towards other non-target species - Price for extraction/synthesis

▶ Jancula & Marsalek, 2011

CEE 697z - Lecture #31

Artificial Mixing

- ▶ Counter formation of surface blooms
- ▶ Oxygenate the hypolimnion
 - ▶ Reduce internal nutrient loading from sediments



CEE 697z - Lecture #31

Bloom Prevention

- ▶ Controlling nutrient concentrations
 - ▶ C, N, P
 - ▶ Long-term treatment strategy
- ▶ TMDLs
 - ▶ Program to control non-point sources of pollution
 - ▶ Run on a state-by-state basis
 - ▶ Require some level of watershed assessment
 - ▶ Limitations
 - ▶ Difficulty controlling autochthonous nutrient recycling
 - ▶ No “one size fits all” solution
- ▶ Monitoring

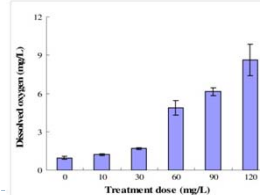
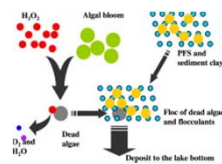
CEE 697z - Lecture #31

Additional Slides

CEE 697z - Lecture #3 |

Less Common Methods of HAB Treatment

- ▶ **Sediment**
 - ▶ Dredging
 - ▶ Capping
 - ▶ Chemical treatment to “lock in” nutrients and cyanobacteria
- ▶ **Integrated approaches (e.g. Wang et al., 2012)**
 - ▶ Combined use of:
 - ▶ hydrogen peroxide as an algaecide
 - ▶ Lake sediment clay and polymeric ferric sulfate as flocculants



CEE 697z - Lecture #3 |
Effects of the algaecide-flocculants on the dissolved oxygen in lake sediment.

Toxin Production

- ▶ Some cyanobacteria produce multiple types of toxins
- ▶ Some produce no toxins
- ▶ Some produce toxins that are held within the cell (e.g. Microcystis), while others release a portion of the toxins produced into the environment immediately (e.g. Cylindrospermopsis)

▶ CEE 697z - Lecture #31

Why Produce Toxins?

There are many speculated reasons...

- ▶ These tend to fall into two categories:
 - ▶ Theory 1: Direct Competitive Advantage
 - ▶ Theory 2: Internal Chemical used in Cell Physiology
- ▶ Known abiotic factors
 - ▶ Nutrient concentration
 - ▶ Light intensity
 - ▶ Temperature

▶ *Holland & Kinnear, 2013*

CEE 697z - Lecture #31

Theory 1: Direct Competitive Advantage

- ▶ **Grazing defense**
 - ▶ Toxins are toxic to zooplankton (e.g. rotifers, daphnia,
- ▶ **Allelopathy**
 - ▶ The production of chemicals to prohibit the function &/or growth of other organisms
- ▶ **Assistance in Nutrient Uptake**
 - ▶ e.g. Iron Scavenging

▶ CEE 697z - Lecture #31

Theory 2: Internal Role in Cell Physiology

- ▶ **Assistance in nutrient uptake**
- ▶ **Iron scavenging**
- ▶ **Adaptation to oxidative stress &/or carbon-nitrogen metabolism**
- ▶ **Maintenance of homeostasis**
- ▶ **Infochemicals**
 - ▶ Chemical cues in the environment which act as a source of information about both the biotic and abiotic environment
 - ▶ May act as “signaling molecules” between cyanobacteria

▶ CEE 697z - Lecture #31

Final thoughts:

- ▶ Triggers for cyanotoxin production are not well understood!
- ▶ Cyanobacteria have been around a long time
 - ▶ The original ecological roles of cyanotoxins may have been lost or replaced over time.



CEE 697z - Lecture #31

-
- ▶ [To next lecture](#)



CEE 697z - Lecture #31