

[Print version](#)

# CEE 772: Instrumental Methods in Environmental Analysis

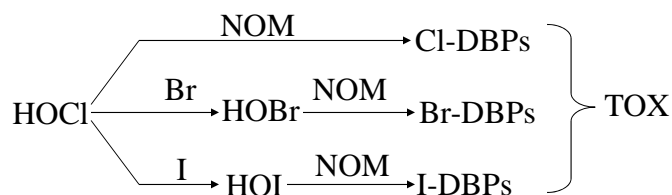
## TOTAL ORGANIC HALOGEN (TOX) (SKOOG, CHAPTS. 24D; PP.632-636)

(Harris, Chapt. 16-6 & 17-4)  
(pp.430, 457-461)

CEE 772 #9

Rassil Sayess &amp; Dave Reckhow

## TOX Formation



$$\text{TOX} = \text{TOCl} + \text{TOBr} + \text{TOI}$$

Other disinfectants:  $\text{NH}_2\text{Cl}$ ,  $\text{O}_3$ ,  $\text{ClO}_2$

From: Guanghui Hua; 2004 WQTC

CEE 772 #9

Rassil Sayess &amp; Dave Reckhow

## What do we know so far?

3

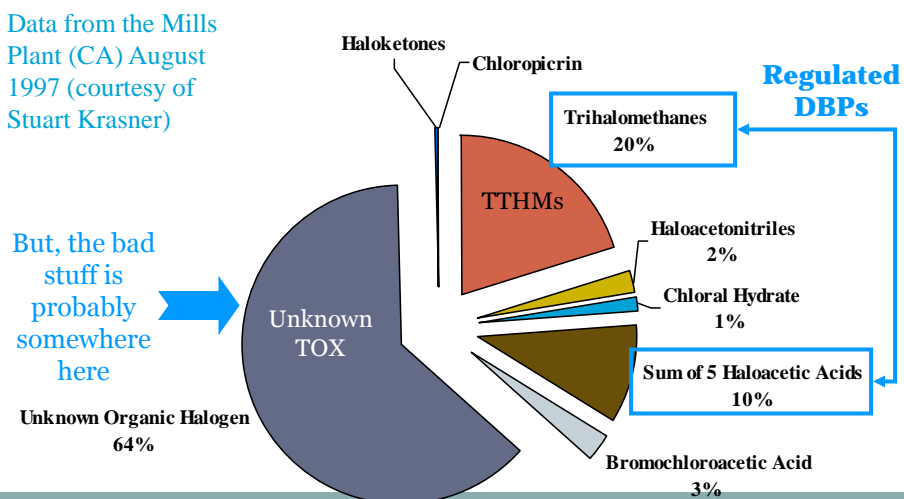
- 700 reported DBPs with limited number of quantitative and epidemiological data
- Approximately 50% of the TOX formed by drinking water chlorination is not accounted for → concern about the identity and concentrations of DBPs
- Heavier halogens result in higher toxicity in chlorinated and chloraminated drinking water
- Not feasible to account for each and every compound that might be formed in disinfected water
- Measures of TOX: A surrogate measure for organically-bound halogenated DBPs in a disinfected water sample.
- Comparing the TOX vales with the halides attributed to the identified DBPs: allow for the estimation of the unidentified TOX
- TOX analyzers: used to quantify amounts of organically-bound chlorine, bromine and iodine in raw and disinfected water samples

CEE 772 #9

Rassil Sayess &amp; Dave Reckhow

## TOX: Known & Unknown

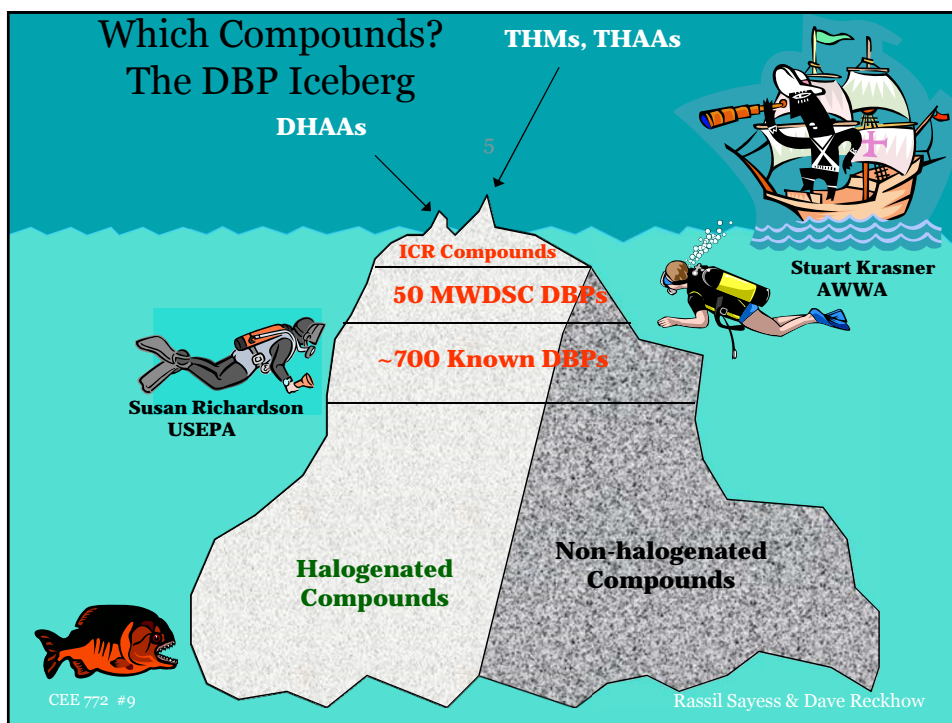
Data from the Mills Plant (CA) August 1997 (courtesy of Stuart Krasner)



4

CEE 772 #9

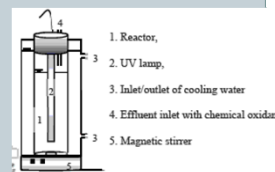
Rassil Sayess &amp; Dave



## Methods to “measure” TOX

6

- Adsorption, pyrolysis, [microcoulometric titration](#)
  - Standard method
- UV/H<sub>2</sub>O<sub>2</sub> oxidation/IC
- [Neutron activation/γ ray spectroscopy](#)
  - Can differentiate between the halogens
  - Very high cost
- [Adsorption, nitrate wash, pyrolysis](#) with Dohrmann or Euroglas then IC or ICP-MS
  - Can differentiate between the halogens



CEE 772 #9

Rassil Sayess &amp; Dave Reckhow

### Conventional Method

Adsorption                      Pyrolysis                      Microcoulometric Titration

Coulometry determine the amount of matter transformed during an electrolysis reaction by measuring the amount of electricity (in coulombs) consumed or produced.

Drawbacks:

- Can not differentiate between Cl, Br and I.
- Calculated as the molar mass of organic halides, expressed as Cl.

From: Guanghai Hua; 2004 WQTC

CEE 772 #9 Rassil Sayess & Dave Reckhow

### Cornell Cold Neutron Source and PGAA Facility Layout

## Neutron activation/ $\gamma$ ray spectrometry

REACTOR BAY

PGAA ROOM

PGAA Sample Position

13 Element Neutron Guide

8

3E 3W

6SE 6SW

6E 6W

4E 4W

BR10A Pool

2' thick Lead (Concrete)

Upper Fill Line

Cryorefrigerator Cold Head

He Lines

Lower Fill Line

Neutron Guides

Shutter

Moderator Chamber

Lead Shield

Copper Cold Rod

Shielding

N-Guide Vacuum Jacket

CEE 772 #9 Rassil Sayess & Dave Reckhow

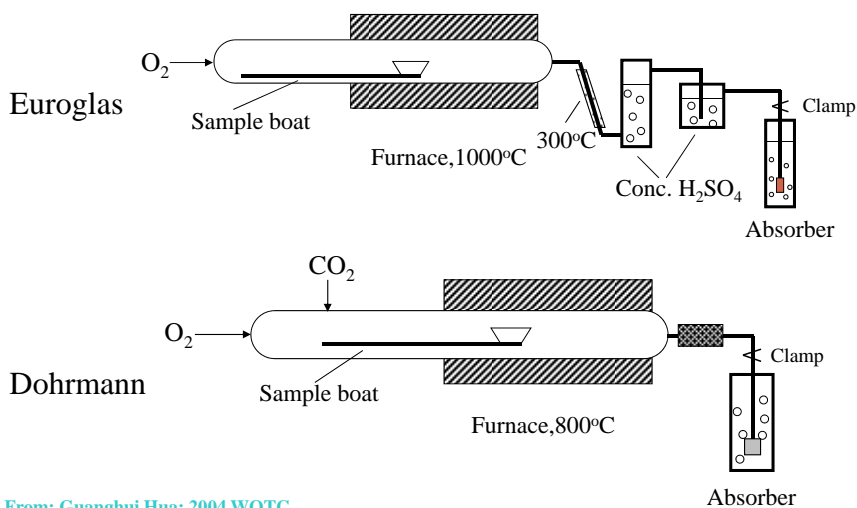
Hua and Reckhow, 2006a.  
 Determination of TOCl, TOBr, and TOI in  
 drinking water by pyrolysis and off-line ion  
 chromatography. Anal. Bioanal. Chem.

- Comparing Dohrmann and Euroglas TOX instruments when coupled with IC
- Looking into effect of nitrate wash on recovery
- Comparing Dohrmann and Euroglas TOX instruments in coulometry mode

CEE 772 #9

Rassil Sayess &amp; Dave Reckhow

Schematic Diagrams of the Absorption  
 Systems



From: Guanghui Hua; 2004 WQTC

CEE 772 #9

10

Rassil Sayess &amp; Dave Reckhow

## Schematic Diagrams of the Absorption Systems

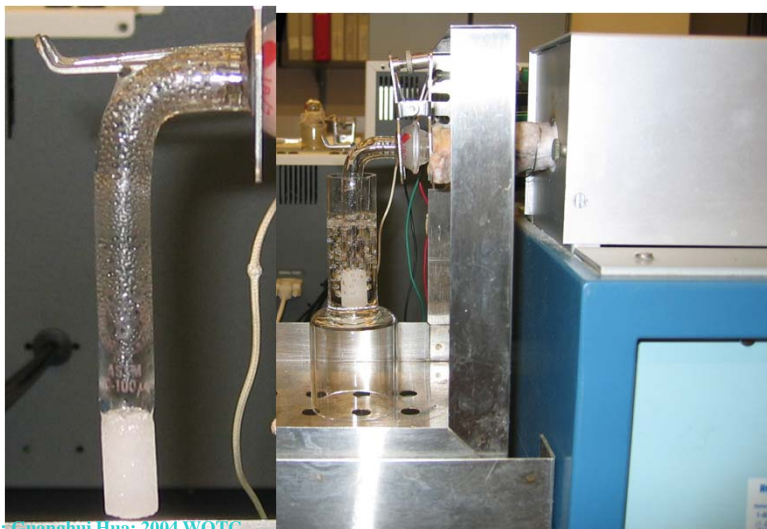
	Dohrmann	Euroglas
Gas	O <sub>2</sub> (carrier) CO <sub>2</sub> (auxiliary)	O <sub>2</sub> (carrier)
Drying prior to combustion	250 decC, 2 min CO <sub>2</sub> gas only	1.5 min
Furnace temperature (deg C)	800 O <sub>2</sub> only	1000
Exit temperature (degC)	-	300
Acid to remove the water vapour in the off-gas	-	H <sub>2</sub> SO <sub>4</sub>
Reaction gas containing hydrogen halides collected	15 mL then 5 mL rinse=20 mL	15 mL then 5 mL rinse=20 mL

CEE 772 #9

11

Rassil Sayess &amp; Dave Reckhow

## Dohrmann Absorption System



From: Guanghui Hua; 2004 WQTC

CEE 772 #9

12

Rassil Sayess &amp; Dave Reckhow

## Step 1: adsorption, nitrate wash, combustion, off-gas collection

13



CEE 772 #9

Rassil Sayess &amp; Dave Reckhow

## Step 2:

14

- Use of IC machine for chloride
  - Gives peaks at specific retention times

CEE 772 #9

Rassil Sayess &amp; Dave Reckhow

## Selected GACs for the Tests

Characteristics	Carbon Identification		
	<b><i>CPI-002</i></b> (standard)	<b><i>CPI-001</i></b>	<b><i>F-600</i></b>
Supplier	CPI	CPI	Calgon
Source	Coconut	Coconut	Coal
Particle Size	100-200 mesh (149-249 $\mu\text{m}$ opening)	100-200 mesh (149-249 $\mu\text{m}$ opening)	Granular
Background	0.4 $\mu\text{gCl}/40\text{mg}$	$\leq 1.0$ $\mu\text{gCl}/40\text{mg}$	Unknown

From: Guanghui Hua; 2004 WQTC

CEE 772 #9

15

Rassil Sayess & Dave Reckhow

## Nitrate wash after adsorption

16

- Purpose: to remove interferences related to inorganic halides so that we don't get biased TOX results.

Method	Working solution concentration	Rinsing volume	Nitrate loading <sup>a</sup>
Euroglas	1,240 mg $\text{NO}_3^-/\text{l}$ <sup>a</sup>	25 ml	31 mg $\text{NO}_3^-/\text{sample}$
Dohrmann	5,000 mg $\text{NO}_3^-/\text{l}$	2 ml	10 mg $\text{NO}_3^-/\text{sample}$
Standard method	5,000 mg $\text{NO}_3^-/\text{l}$	2-5 ml	10-25 mg $\text{NO}_3^-/\text{sample}$

<sup>a</sup>Values were calculated based on information from operational manual and standard method

CEE 772 #9

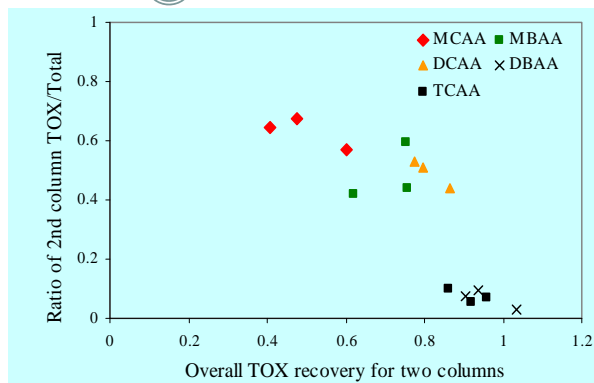
Rassil Sayess & Dave Reckhow



## HAA recovery

17

- 30 mL nitrate wash
- 100, 300 and 500 ug/L
- Higher MW compounds, higher recovery
- Decreased ratio, higher recovery



From: Guanghui Hua; 2004 WQTC

CEE 772 #9

Rassil Sayess & Dave Reckhow

## DCAA recovery with Euroglas

18

Standards	Washing volume	1st column (µg Cl/l)	2nd column (µg Cl/l)	Total (µg Cl/l)	Recovery
DCAA	30 ml	108	125	233	78%
300 µg Cl/l	25 ml	141	112	253	85%
Cl/l	13 ml	208	77	285	95%

- DCAA 300 ugCl/L used
- Highest recovery with 13 mL of washing solution
- Higher washing volumes caused washing out of the Cl

CEE 772 #9

Rassil Sayess & Dave Reckhow

## Halide rejection by different carbon columns

19

Halide	Concentration (mg/L)	CPI-002	CPI-001	F-600
Cl <sup>-</sup>	1000	500,000	500,000	200,000
Br <sup>-</sup>	500	250,000	250,000	45,000
I <sup>-</sup>	1	>100	>100	12
	5	30	>100	3

- Excessive inorganic I retention using F-600
- Rejection: Cl>Br>I

CEE 772 #9

Rassil Sayess &amp; Dave Reckhow

## Euroglas analyzer/IC versus Euroglas/Microcoulometry

20

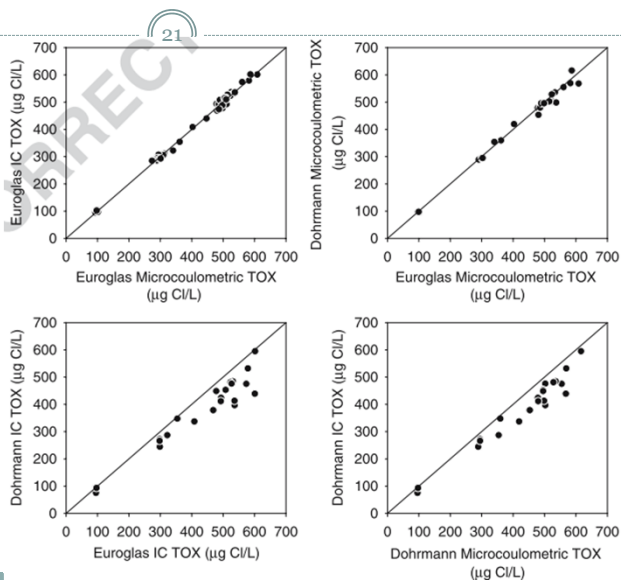
Compound	Recovery (%)	
	Microcoulometric	IC
Dibromochloromethane	103	104
Dichlorobromomethane	102	101
Bromoform	98	98
Tribromoacetic acid	98	98
Trichloroacetic acid	100	97
Dibromoacetic acid	102	101
Dichloroacetic acid	98	101
Bromochloroacetic acid	97	100
Monoiodoacetic acid	99	94
Monobromoacetic acid	96	95
Monochloroacetic acid	91	92

CEE 772 #9

Rassil Sayess &amp; Dave Reckhow

## General comparisons

- All data from model compounds and real water samples
- No real difference for Euroglas IC versus Euroglas Microcoulometry or in Dohrmann and Euroglas Microcoulometry
- Better performance of Euroglas IC TOX versus Dohrmann IC TOX



## Iodinated compounds in the literature

22

Compound Name	Goslan et al., 2009	Ye et al., 2012	Pan and Zhang, 2013	Hua et al., 2006	Richardson et al., 2008
Dichloroiodomethane	USEPA 551.1	-	-	Pentane extraction GC/ECD	USEPA 552.3
Bromochloroiodomethane	USEPA 551.1	-	-	Pentane extraction GC/ECD	USEPA 552.3
Iodoform	-	USEPA 551.1	-	Pentane extraction GC/ECD	-
Iodoacetic acid	-	USEPA 551.1	UPLC/ESI-MS/MS	-	USEPA 552.3
Triiodoacetic acid	-	USEPA 551.1	-	-	-
3-iodo-4-hydroxybenzoic acid	-	-	UPLC/ESI-MS/MS	-	-
Diiodoacetic acid	-	-	UPLC/ESI-MS/MS	-	-
3,5-diiodo-4-hydroxybenzaldehyde	-	-	UPLC/ESI-MS/MS	-	-
2,6-diiodo-4-nitrophenol	-	-	UPLC/ESI-MS/MS	-	-
2,4,6-triiodophenol	-	-	UPLC/ESI-MS/MS	-	-
Chloroiodomethane	-	-	-	Pentane extraction GC/ECD	-
Dibromoiodomethane	-	-	-	Pentane extraction GC/ECD	-
Bromoiodomethane	-	-	-	Pentane extraction GC/ECD	-
Dichloroiodomethane	-	-	-	-	USEPA 552.3
Bromoiodoacetic acid	-	-	-	-	USEPA 552.3

## Method improvement

23

- Still use of adsorption, pyrolysis and collection of off-gas, with or without nitrate wash.
- Use of off-line inductively coupled plasma-mass spectrophotometer (ICP-MS) for Iodine and Bromine quantification in place of the IC.

CEE 772 #9

Rassil Sayess &amp; Dave Reckhow

## ICP-MS

24

- Sensitive analytical machine for Bromine and Iodine detection
- Low method detection limits
- Carrier gas is Ar(g)
- Look for multiple analytes at the same time
- Fast (2-3 minutes per sample) and precise
- Famous for detecting metals and several non-metals at very low concentrations
- Sample is injected and ionized in the ICP part then the MS is used to separate and quantify the ions
- Drawbacks:
  - Ar interferes with some analytes
  - Uses a lot of gas
  - High maintenance in case it broke

CEE 772 #9

Rassil Sayess &amp; Dave Reckhow

## ICP-MS Results

25

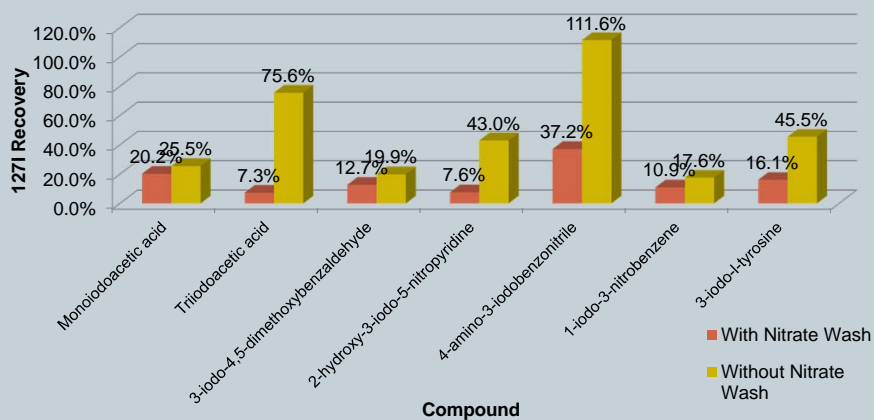
- **Method detection limit (MDL)**
  - The mean concentration and the standard deviation of this mean between seven replicates were calculated
  - The student t-value at 99% confidence interval and n-1 degrees of freedom (3.143 for seven replicates) was then multiplied by this standard deviation to yield a statistical estimate of the MDL.
- **Limit of quantitation (LOQ)**
  - The minimum concentration that can be reported with a specified degree of confidence
  - Calculated as the MDL multiplied by a factor of 3.182.
- **Iodine: the MDL and LOQ were 0.19 and 0.61 µgI/L, respectively**
- **Bromine: the MDL and LOQ were 0.98 and 3.13 µgBr/L**

CEE 772 #9

Rassil Sayess &amp; Dave Reckhow

## Recovery of iodinated compounds with/without nitrate wash

26



CEE 772 #9

Rassil Sayess &amp; Dave Reckhow

## Method development

27

- **Initial pH of sample prior to adsorption**
  - pH < 2 for chloride and bromide
  - pH < 1 for iodide
- **Addition of H<sub>2</sub>O<sub>2</sub> in absorber cell**
  - If the absorber cell contained not only hydrogen halides (HX), but also halide gas (X<sub>2</sub>) → need to be converted to X<sup>-</sup> in order to be detected by the ICP/MS
- **Addition of tetramethyl ammonium hydroxide (TMAH) prior to ICP-MS**
  - 0.1% for bromide
  - 2% for iodide
  - Reduces memory effect on glassware in ICP-MS
- **Use of HNO<sub>3</sub> (2%) versus TMAH (0.1%) wash as rinse solution in ICP-MS**
  - TMAH for Br
  - HNO<sub>3</sub> for HNO<sub>3</sub>

CEE 772 #9

Rassil Sayess &amp; Dave Reckhow

## To find best combination

28

- **Verify “optimal” combination of steps to achieve highest recovery of compounds (e.g., IAA or BAA)**
  - ANOVA (full-factorial, duplicates)
    - ✦ Study of the effects of multiple factors
    - ✦ Useful for comparing response across multiple combinations of independent variables

CEE 772 #9

Rassil Sayess &amp; Dave Reckhow

- [To next lecture](#)