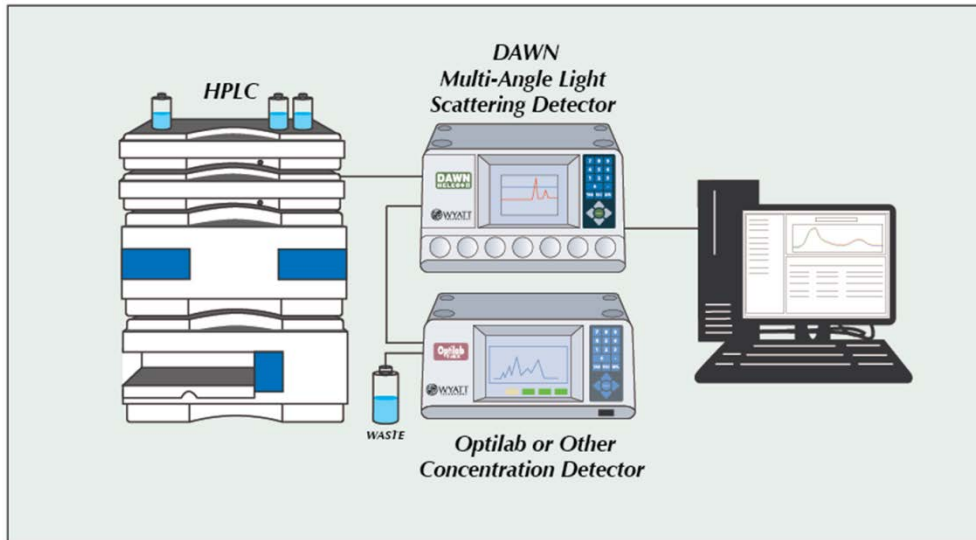


An introduction to Size exclusion chromatography with light scattering and refractive index detection

Analyte: Dextran (a polysaccharide)



Presentation on working and basic principles of SEC; light scattering and RI detection techniques

Sample run

Brief data analysis

For more on the HPLC see: <http://www.ecs.umass.edu/eve/facilities/equipment/Allianceresources.html>