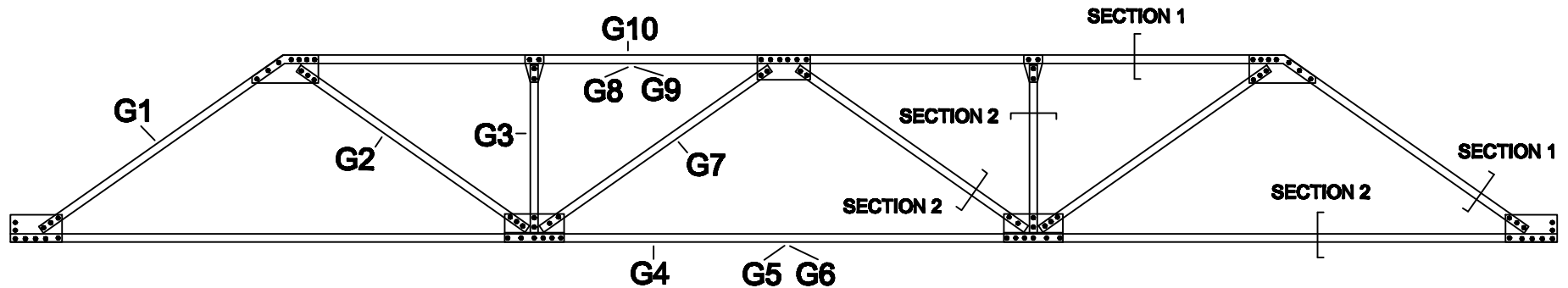
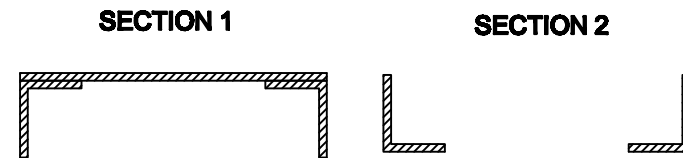


SOUTHERN VERMONT (1906) BRIDGE GAGE PLACEMENT



GAGE #	NOTES
G1	PLATE OF TOP CHORD
G2	DECKSIDE ANGLE OF OUTER DIAGONAL
G3	DECKSIDE ANGLE OF VERTICAL MEMBER
G4	DECKSIDE ANGLE NEAR GUSSET PLATE ON BOT. CHORD
G5	OUTSIDE ANGLE OF BOT. CHORD
G6	DECKSIDE ANGLE OF BOT. CHORD
G7	DECKSIDE ANGLE OF INNER DIAGONAL
G8	PLATE OF TOP CHORD
G9	ANGLE OF TOP CHORD
G10	PLATE OF TOP CHORD OF WEST SIDE TRUSS

CROSS SECTIONS



Note: The angles shown in section two are joined by varying lattice and plate patterns.

UMASS Amherst	Southern Vermont 1906 Bridge - 1 of 2
	Dr. Arwade & Dr. Luttenegger
	University of Massachusetts Amherst
	23 July 2009
By Ryan Mones & Johnny Sullivan	